

# Evolving schema representations in orbitofrontal ensembles during learning

<https://doi.org/10.1038/s41586-020-03061-2>

Received: 23 March 2020

Accepted: 3 November 2020

Published online: 23 December 2020

 Check for updates

Jingfeng Zhou<sup>1✉</sup>, Chunying Jia<sup>2</sup>, Marlian Montesinos-Cartagena<sup>1</sup>, Matthew P. H. Gardner<sup>1</sup>, Wenhui Zong<sup>1</sup> & Geoffrey Schoenbaum<sup>1✉</sup>

How do we learn about what to learn about? Specifically, how do the neural elements in our brain generalize what has been learned in one situation to recognize the common structure of—and speed learning in—other, similar situations? We know this happens because we become better at solving new problems—learning and deploying schemas<sup>1–5</sup>—through experience. However, we have little insight into this process. Here we show that using prior knowledge to facilitate learning is accompanied by the evolution of a neural schema in the orbitofrontal cortex. Single units were recorded from rats deploying a schema to learn a succession of odour-sequence problems. With learning, orbitofrontal cortex ensembles converged onto a low-dimensional neural code across both problems and subjects; this neural code represented the common structure of the problems and its evolution accelerated across their learning. These results demonstrate the formation and use of a schema in a prefrontal brain region to support a complex cognitive operation. Our results not only reveal a role for the orbitofrontal cortex in learning but also have implications for using ensemble analyses to tap into complex cognitive functions.

Rats were trained on an odour-sequence task<sup>6,7</sup>. On each trial, they sampled one of 16 odours and decided whether to respond to obtain reward (Fig. 1a). The odours were organized into two sequence pairs (Fig. 1b; S1a–S1b and S2a–S2b), each with six trials (positions; P1–P6). All but two odours had a fixed association with reward, so for most of the 24 trial types, information about sequence was not required, although it could be used to anticipate reward. However, for the odours at P4 and P5 in S2 (S2a4+, S2b4–, S2a5– and S2b5+), the meaning of the same odour differed between the two subsequences (S2a and S2b). At these positions, the rats had to maintain the sequence information across several trials to perform correctly.

After shaping, the rats were trained on five new problems in which the sequence and reward structure (Fig. 1b) remained the same, but 16 new odours were used (problem 1–problem 5; Fig. 1c). Thus, for each problem, the rats had to learn how the new odours fit into the sequence template (that is, the schema) learned in previous problems. Rats were trained for 15–23 days on each problem. To align the analyses, each dataset was truncated to 15 sessions, including the first 14 sessions of learning and data from the session with the best performance thereafter (Extended Data Fig. 1). Behaviours reflecting the sequences emerged during this training, including correct responding on trial types that required recall of the sequences (Fig. 1d–g, Extended Data Fig. 2) as well as changes in the time the rats spent to initiate each trial—their poke latency—reflecting reward availability on the current and upcoming trials (Fig. 1h–j).

## Reduced neural dimensionality

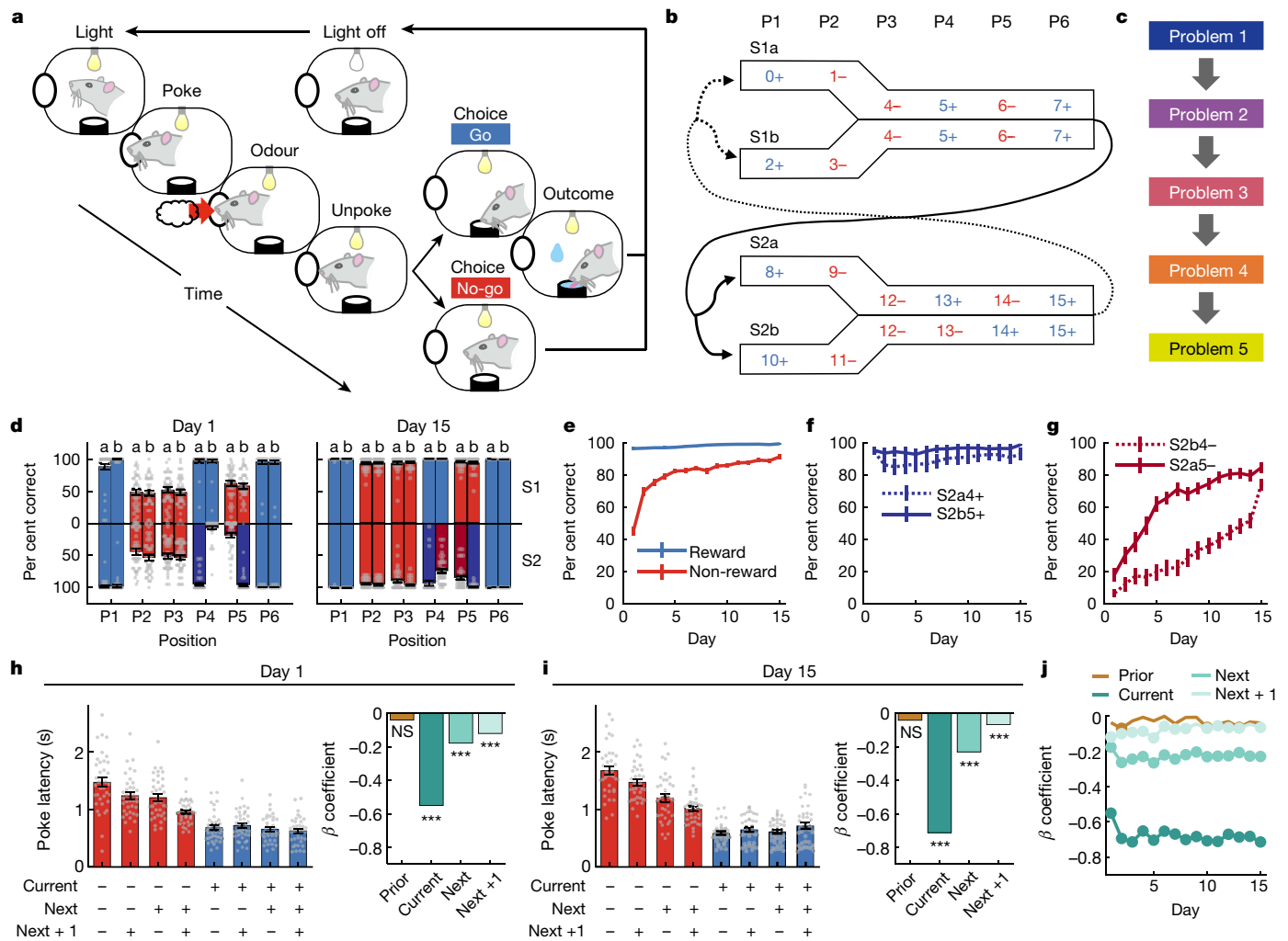
The numbers of neurons ( $n = 1,122.9 \pm 41$ , mean  $\pm$  s.d.; all problems and rats combined; Extended Data Fig. 3a, b, Supplementary Tables 1, 2)

recorded in the orbitofrontal cortex (OFC) and their overall activity (Extended Data Fig. 3c, d) remained stable across days. The percentage of neurons that were selective among the 24 trial types decreased during learning, whereas the percentage of neurons that were sensitive to reward increased (Extended Data Fig. 3e, f). We used an independent component analysis (ICA) followed by a linear discriminant analysis (LDA) to reduce the dimensions in the single-unit data (480 trials  $\times$   $N$ ;  $N =$  approximately 1,123 neurons per day  $\times$  4 epochs  $\times$  8 time points; the 4 epochs are: ‘light’, ‘poke’, ‘odour’ and ‘unpoke’; peri-event time at each epoch was:  $-0.2$  to  $0.6$  s; bin size =  $0.1$  s; Fig. 2) and then measured the Mahalanobis distance (that is, representational dissimilarity) between each pair of trial types within the resultant activity space (that is, linear discriminant components (LCs)). This revealed a marked compression of the activity space from day 1 to 15 (Fig. 2a, b, Extended Data Fig. 4a–h). The distribution of variance on the LCs shifted across days of training from a high-dimensional pattern to one associated with lower dimensionality (Fig. 2c, d, Extended Data Fig. 4i, j). As a result, during learning, the percent of variance explained by the first three LCs increased (Fig. 2e) and the number of LCs that explained 80% variance decreased (Fig. 2f), especially for the S1 sequence, where maintaining sequence information was not required for correct responses (Fig. 2g). These changes are consistent with the formation of a neural schema.

## Evolving cross-problem and cross-subject decoding

The observed neural representation on each problem is a projection of the true neural representation onto a neural activity space defined by the currently recorded neurons, which can be studied within a lower-dimensional subspace or neural manifold<sup>8</sup>. If the activity in

<sup>1</sup>Intramural Research Program of the National Institute on Drug Abuse, Baltimore, MD, USA. <sup>2</sup>Department of Computer Science and Electrical Engineering, University of Maryland Baltimore County, Baltimore, MD, USA. ✉e-mail: jingfeng.zhou@nih.gov; geoffrey.schoenbaum@nih.gov

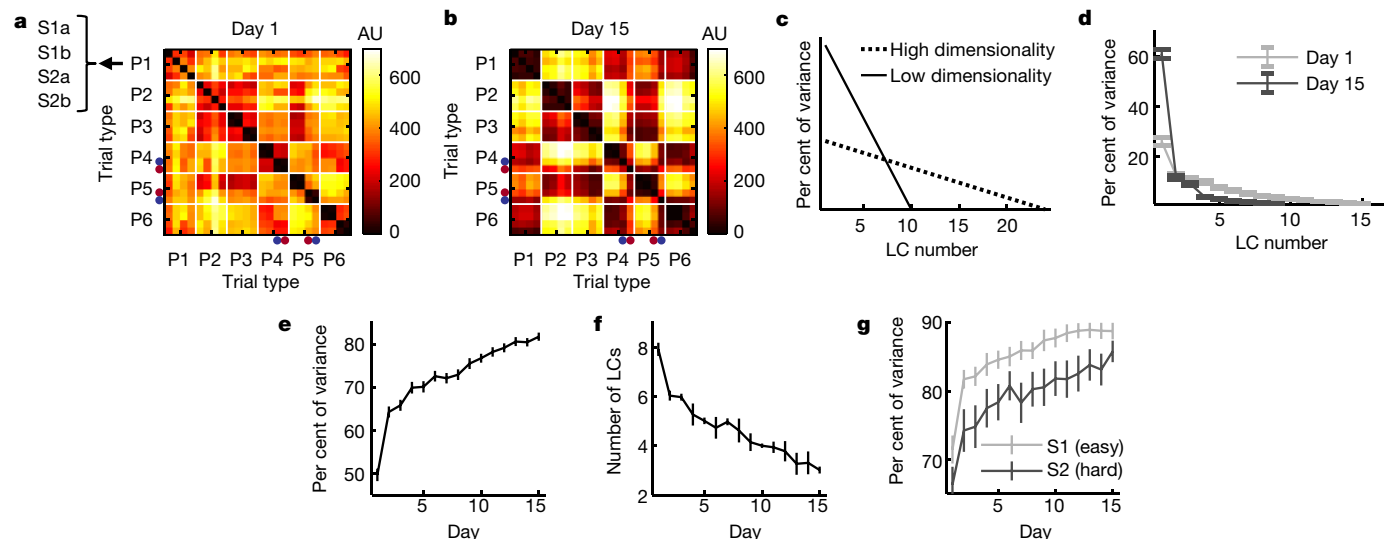


**Fig. 1 | Task design and behaviour.** **a**, Single-trial illustration of the odour-sequence task. **b**, Sixteen odours were organized into two pairs of sequences (S1a–S1b and S2a–S2b), each consisting of six trials or positions (P1–P6). Blue +, rewarded; red –, non-rewarded; 0–15, odour identities; arrows indicate transitions between sequences. **c**, Each problem uses the same odour-sequence structure but with 16 new odours. Nine rats were trained successively on five problems after shaping. Behavioural analyses combined the five problems and nine rats with data aligned to training days. **d**, Per cent correct in S1 (above y-axis) and S2 (below y-axis). Blue, rewarded; red, non-rewarded. Darker colours indicate trial types that require rats to use past sequences. **e–g**, Per cent correct during learning averaged for trials at all positions (**e**) and also shown for trials in S2 at P4 and P5 (**f**, rewarded; **g**, non-rewarded). **h, i**, Poke latency (house lights onset to odour port entry) sorted by future rewards on day 1 (**h**, left) and day 15 (**i**, left). A linear regression for the poke latency was fit with four regressors (reward on the prior, current, next and next + 1 trials) for day 1 (**h**, right) and day 15 (**i**, right). NS, not significant; \*\*\* $P < 0.001$ . **j**, Regression coefficients during learning. Round markers indicate statistical significance. \* $P < 0.05$ ; corrected with the Benjamini–Hochberg procedure. **d, h, i, n** = 37 and 36 sessions for day 1 and day 15, respectively. **d–i**, Data are mean  $\pm$  s.e.m. Statistics are presented in Supplementary Table 3.

the OFC is converging onto a schema with learning across problems, the true neural representation should become increasingly similar with learning across each problem. However, changes in the recorded neurons across days and problems can cause the observed neural representations to appear misaligned, even if they reflect the same true neural representation. To overcome this problem, we used a canonical correlation analysis (CCA) to align the dimensionality-reduced neural datasets acquired each day on different problems<sup>8</sup>. The CCA finds linear transformations for pairs of neural datasets, such that the transformed datasets are maximally correlated. This results in canonical components (CCs) describing the neural activities from each dataset within a common neural manifold. A higher correlation between a given pair of CCs means better alignment of the two datasets on this particular dimension, consistent with a more generalized, as opposed to idiosyncratic, neural representation (Extended Data Fig. 5a).

If a neural schema exists, this procedure should reveal alignment of the neural activity across problems; stronger schema should result in stronger alignment across problems. Furthermore, we should be able to use the CCs derived from this analysis to identify or map the trial types from the CCs derived from the analysis of other problems. To test these predictions, we conducted a decoding analysis in which we used 60 CCs generated from two of the five problems as training sets, and 60 CCs generated from two of the remaining problems as test sets (Extended Data Fig. 5b). Comparing the corresponding CCs, we found strong correlations between the CCs derived from the training and test data, with a notable increase from day 1 to day 15, consistent with the development of a generalized neural code—the neural signature of a schema—across problems (Fig. 3a, Extended Data Fig. 6).

A closer examination of the activity of the paired CCs revealed that the first three exhibited a clear relationship to specific task features: ‘current value’ defined by whether the trial was rewarded, ‘odour overlap’



**Fig. 2 | Dimensionality of the task representation.** The neural data combined five odour problems and nine rats with alignment to the training days. For each repeat, the trial order within each one of the 24 trial types was shuffled for each neuron to create a new pseudo-ensemble. An ICA was performed on the neural firing data to extract a low-dimensional representation of the neural data (480 trials  $\times$  100 neural dimensions), which then underwent an LDA with the labels of 24 trial types. **a, b**, Dissimilarity matrices on day 1 (**a**) and day 15 (**b**) showing the Mahalanobis distance between each pair of trial types in the LDA activity space

(averaged across 500 repeats). Within each position: S1a, S1b, S2a and S2b. Blue dots, S2a4+ and S2b5+; red dots, S2b4- and S2a5-; AU, arbitrary units. **c**, Theoretical variance distributions. **d**, Actual variance distributions on day 1 and day 15. **e**, The per cent of variance explained by the first 3 LCs. **f**, The number of LCs needed to explain 80% variance of the data. **g**, The per cent of variance explained by the first three LCs for sequences S1 and S2 separately. **d–g**,  $n = 500$  repeats; data are mean  $\pm$  s.d. Statistics are presented in Supplementary Table 4.

defined by whether the odour was unique or shared, and ‘positional alternation’ defined by an alternating pattern along each sequence. The relationships between the first three CCs and their respective task features increased in strength from day 1 to day 15 (Fig. 3a–c), generally improving cross-problem decoding of the trial types (Fig. 3d, e, aligned). Notably, the accuracy of this cross-problem decoding was disrupted when the order of the 24 trial types was shuffled independently in each problem to misalign the sequence structure (Fig. 3d, e, misaligned); this demonstrates the dependence of the decoding on the generalizable structure of the problems—direct evidence for the construction of a neural representation of the odour-sequence task capable of generalizing across problems. This process of construction was also evident in the marked changes in the cross-problem decoding that occurred with learning (Fig. 3d, aligned), particularly after the first few days of training (Fig. 3f), which reflected bidirectional changes in the ability of the decoder to correctly distinguish sequences (Extended Data Fig. 7a, b) and positions (Extended Data Fig. 7c–f). Specifically, cross-problem decoding of the positions improved during learning, whereas cross-problem decoding within each position tended to diminish for odour-unique positions (behaviourally-similar but discriminable by odours; P1–P2), while improving at odour-overlapping positions (behaviourally-distinct but discriminable only based upon previously presented odours; P4–P6, S2).

While the changes in cross-problem decoding presumably reflect convergence of the neural representations across problems within each subject, it is not clear from this analysis whether neural representations in the OFC also converged on a common solution or schema across subjects. Although it is not necessary, the ability to decode across subjects would require the presence of a common neural representation or schema. To address whether this ability is present, the rats were divided into two groups; rats in one group were used to generate CCs for training sets, whereas rats in the other group were used to generate CCs for test sets (Extended Data Fig. 5b). Again, we found strong correlations between CCs from the training and test data (Fig. 4a, Extended Data Fig. 8), the first three CCs developed increasingly strong relationships to the same three task features (current value, odour overlap and

positional alternation) during training (Fig. 4a–c), and again these and the other CCs allowed successful decoding of the different trial types (Fig. 4d, e), which evolved with training (Fig. 4f, Extended Data Fig. 9).

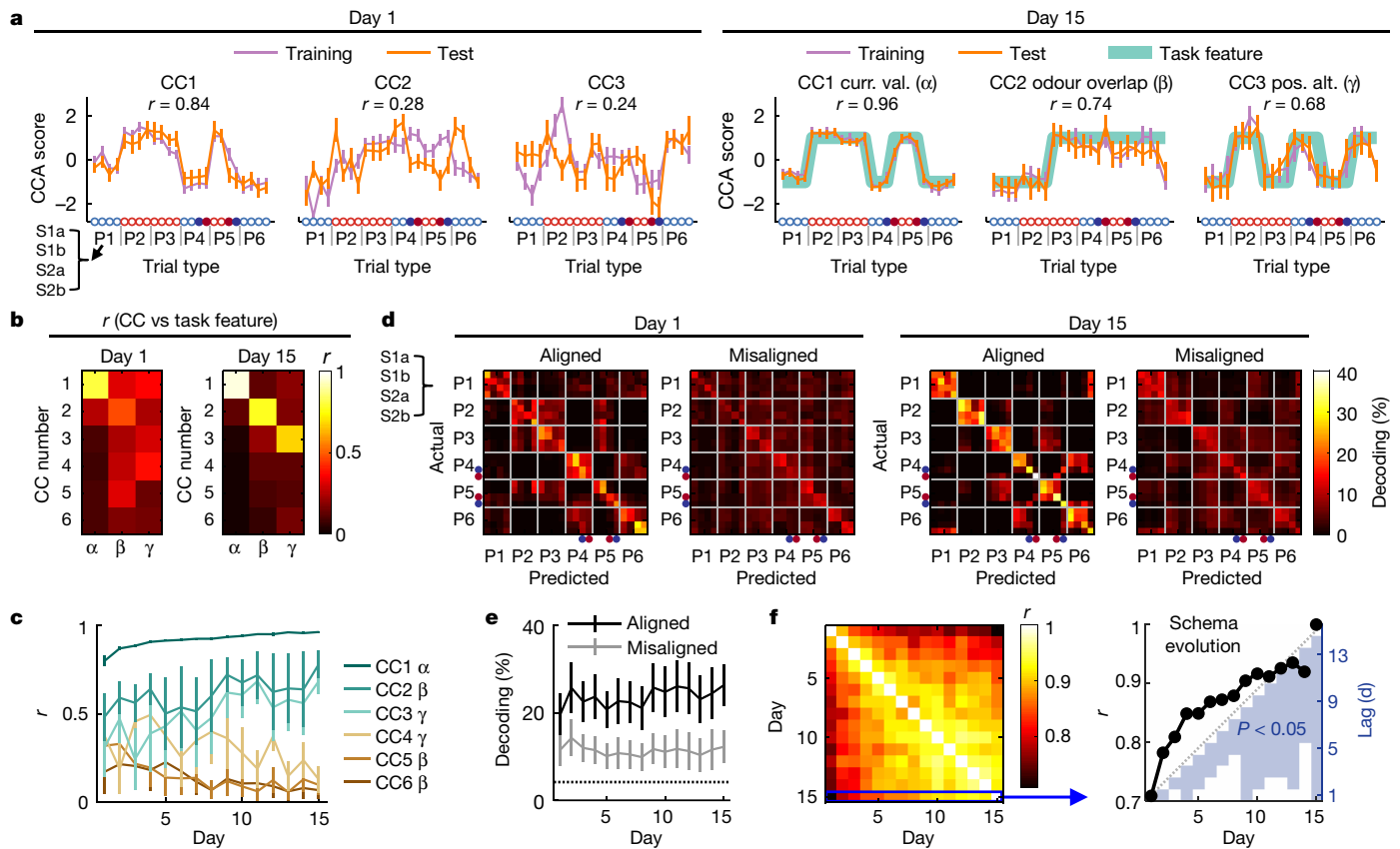
### Accelerating learning and neural changes

Poke latency measures how quickly the rats initiate a trial after the house lights come on; rats responded more quickly when they expected more reward in the future than when they expected less reward (Fig. 1h–j). This pattern developed with learning on each problem, and the speed at which the pattern emerged during learning became faster across problems (Fig. 5a, b, Extended Data Fig. 10). This accelerated learning is evidence of the operation of a schema reflecting knowledge of the sequences. While the temporal resolution of our neural data analysis demonstrating schema formation is by necessity different from resolution of the behavioural analysis demonstrating schema operation, the two should be related if the schema is manifest in the neural activity in OFC. Consistent with this idea, we found that both dimensionality reduction (Fig. 5c) and schema evolution (Fig. 5d) accelerated similarly.

### The importance of identifying schemas

Learning what to learn about and generalizing from one situation to another is arguably one of the most fundamental abilities that distinguishes higher intelligence. The effects of the resultant schemas can be seen in simple motor or sensory processing, in which learning one skill facilitates acquisition of another—knowing how to ski helps us learn to snowboard—but they are also evident in experience-based improvements in more abstract problem-solving skills. From buying groceries to planning experiments, we get better at navigating new situations if we have experienced similar ones in the past.

Here we have identified a neural signature of schema formation in rats using sequences of odours to effectively retrieve rewards. As they were given new sets of odours, the rats were quicker to exhibit behaviour reflecting a knowledge of the sequences. Against this backdrop, we found that neural activity in OFC converged on a common



**Fig. 3 | Cross-problem decoding.** The training (480 trials  $\times$  60 CCs) and test (480 trials  $\times$  60 CCs) datasets were separately obtained through dimensionality reduction and then manifold alignment on pseudo-ensembles from pairs of odour problems. **a**, The first three CCs in training and test from a single repeat.  $r$ , correlation coefficient of paired CCs from training and test sets;  $n = 480$  trials for each CC; Pearson correlation. Blue and red circles indicate rewarded and non-rewarded trials, respectively. Filled circles: S2a4+, S2b4-, S2a5- and S2b5+. Curr. val., current value; pos. alt., positional alternation. **b**, Correlation between the first 6 CCs and three task features. **c**, Correlation between the first 6 CCs and their matched task features. **d**, Decoding confusion matrices on day 1 and day 15. The trial-type orders for training and test sets were misaligned

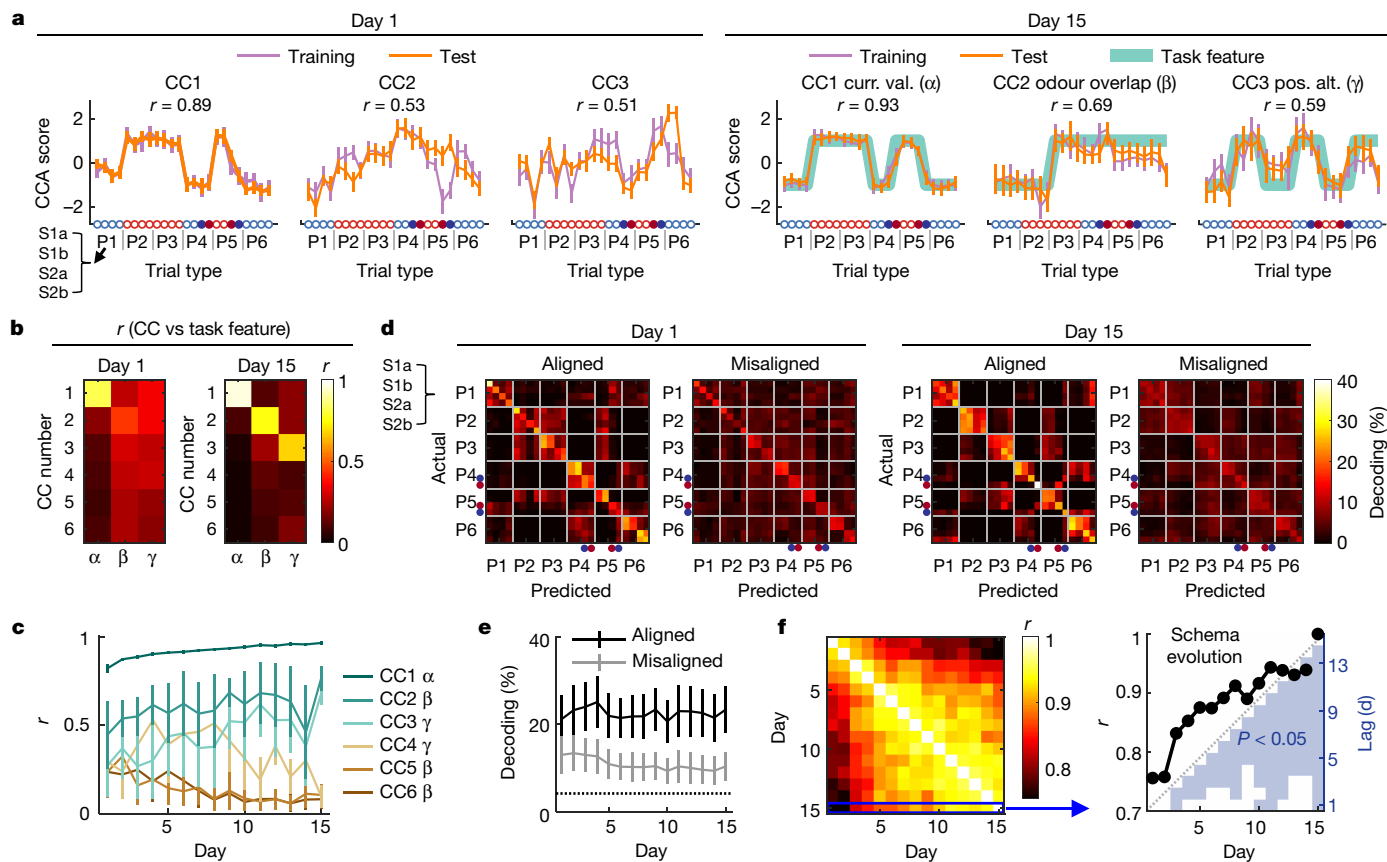
before manifold alignment in the control analysis (misaligned). Blue dots, S2a4+ and S2b5+; red dots, S2b4- and S2a5-. **e**, Comparing the mean decoding accuracy between the aligned and misaligned data. Dotted line indicates the chance level. **f**, Left, correlation of confusion matrices between training days. Right, correlation between day 15 and the other training days. The blue patch indicates where the correlation coefficient on one day is significantly higher on another day that is  $n$  days lagged ( $n = 1-14$ ; y-axis, right;  $*P < 0.05$ , one-tailed z-test after Fisher's r-to-z transformation; corrected with the Benjamini-Hochberg procedure). **a-f**,  $n = 500$  repeats. **a-c-e**, Data are mean  $\pm$  s.d. Statistics are presented in Supplementary Table 5.

representation of the task. This convergence was evident in a reduction in the number of neural dimensions required to represent the task and in improved alignment of neural activities across both problems and subjects, neural changes that accelerated with accelerated learning. Although these neural changes were correlative and thus likely to track increases in efficiency of motor behaviours and other covariates<sup>9</sup>, the rats were pre-trained on the basic skills required in the task, and the improved alignment in neural activity reflected improved representation of critical task-relevant cognitive concepts, some of which were idiosyncratic features of the odour-sequence problems. This work joins a small but growing number of studies that have found neural correlates of schemas in other brain regions<sup>10-16</sup>, including generalization of single-unit and ensemble firing patterns to incorporate new exemplars of a class<sup>11</sup>.

The identification of a neural signature of schema formation in the OFC is intriguing in light of this area's involvement in flexible problem solving, learning set formation and even generalization<sup>17-19</sup>. A common thread across these settings is the need to use the causal structure of the relationships defining the task at hand to support normal behaviour<sup>20</sup>. This observation has led to the hypothesis that the OFC is part of a circuit required for cognitive mapping, which includes other prefrontal areas and hippocampus<sup>6,20-24</sup>. The current correlative data

suggest that the OFC may have a specialized role in this circuit, allowing the meta-structure or rules that characterize individual maps to be abstracted and deployed to aid the formation of new maps. This more specialized function would be consistent with well-appreciated data showing that the OFC is necessary when behaviour requires a cognitive map and with less well-appreciated evidence that this is only true when new information—a new map—is necessary<sup>25</sup>. This is evident in devaluation<sup>26</sup>, sensory preconditioning<sup>18</sup> and over-expectation<sup>27</sup> tasks, during which the OFC is required in phases where an established map must be adjusted to reflect new information. By contrast, when behaviour does not require the integration of new information, in these as well as other settings<sup>28-30</sup>, the OFC tends to be not necessary.

More broadly, this study identifies a neural signature of schema formation in a prefrontal brain region and for information that is not easily characterized as simply reflecting optimization of motor or sensory processing. The pattern of neural activity in the OFC, identified using dimensionality reduction and manifold alignment, converged onto a common solution for a complex cognitive operation. Further, the resultant cognitive schema was neurally generalizable not only across problems within the same brain, but also across brains<sup>14</sup>. That the OFC networks in different subjects converged on a common neural representation is key, since it implies that individuals organize information in a



**Fig. 4 | Cross-subject decoding.** As in Fig. 3, except that training and test sets were separately obtained from pairs of rat groups rather than pairs of problems. For each repeat, the nine rats were randomly separated into four groups. Groups 1 and 2 were used for training and groups 3 and 4 were used for testing.  $n = 500$  repeats. **a**, The first three CCs in training and test from a single repeat. **b**, Correlation between the first 6 CCs and three task features.

**c**, Correlation between the first 6 CCs and their matched task features. **d**, Decoding confusion matrices on day 1 and day 15. **e**, Comparing the mean decoding accuracy between the aligned and misaligned data. **f**, Left, correlation of confusion matrices between training days. Right, correlation between day 15 and the other training day. Data are mean  $\pm$  s.d. Statistics are presented in Supplementary Table 6.

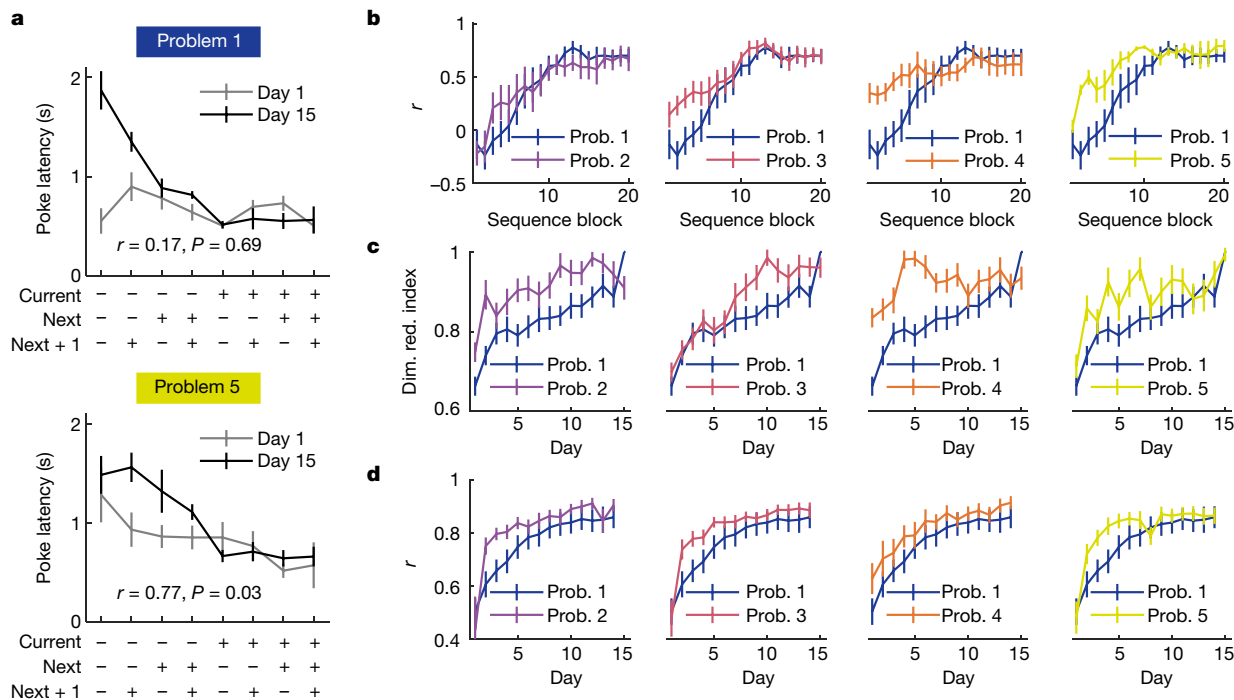
similar format, even for advanced prefrontal functions. This is important for neuroscience, since it suggests that we can identify even these types of functions at a granular level by studying groups of subjects. It also has implications for using brain-machine interfaces to enhance functions beyond sensory perception or simple motor activity, since if neural schemas for complex cognitive operations are not specific to individuals, they may be defined from a general understanding or knowledge of their shape, rather than needing to be tailored to each individual for each problem, which would be much less practical.

### Online content

Any methods, additional references, Nature Research reporting summaries, source data, extended data, supplementary information, acknowledgements, peer review information; details of author contributions and competing interests; and statements of data and code availability are available at <https://doi.org/10.1038/s41586-020-03061-2>.

- Bartlett, F. C. *Remembering: A Study in Experimental and Social Psychology* (Cambridge Univ. Press, 1932).
- Piaget, J. *Langage et Pensée Chez L'Enfant* (Delachaux et Niestlé, 1923).
- van Kesteren, M. T., Ruiter, D. J., Fernández, G. & Henson, R. N. How schema and novelty augment memory formation. *Trends Neurosci.* **35**, 211–219 (2012).
- Gilboa, A. & Marlatte, H. Neurobiology of schemas and schema-mediated memory. *Trends Cogn. Sci.* **21**, 618–631 (2017).
- Tse, D. et al. Schemas and memory consolidation. *Science* **316**, 76–82 (2007).
- Zhou, J. et al. Rat orbitofrontal ensemble activity contains multiplexed but dissociable representations of value and task structure in an odor sequence task. *Curr. Biol.* **29**, 897–907.e3 (2019).

- Zhou, J. et al. Complementary task structure representations in hippocampus and orbitofrontal cortex during an odor sequence task. *Curr. Biol.* **29**, 3402–3409.e3 (2019).
- Gallego, J. A., Perich, M. G., Chowdhury, R. H., Solla, S. A. & Miller, L. E. Long-term stability of cortical population dynamics underlying consistent behavior. *Nat. Neurosci.* **23**, 260–270 (2020).
- Stringer, C. et al. Spontaneous behaviors drive multidimensional, brainwide activity. *Science* **364**, 255 (2019).
- Baram, A. B., Muller, T. H., Nili, H., Garvert, M. & Behrens, T. E. Entorhinal and ventromedial prefrontal cortices abstract and generalise the structure of reinforcement learning problems. Preprint at <https://doi.org/10.1101/827253> (2020).
- McKenzie, S. et al. Hippocampal representation of related and opposing memories develop within distinct, hierarchically organized neural schemas. *Neuron* **83**, 202–215 (2014).
- McKenzie, S., Robinson, N. T., Herrera, L., Churchill, J. C. & Eichenbaum, H. Learning causes reorganization of neuronal firing patterns to represent related experiences within a hippocampal schema. *J. Neurosci.* **33**, 10243–10256 (2013).
- Morrissey, M. D., Insel, N. & Takehara-Nishiuchi, K. Generalizable knowledge outweighs incidental details in prefrontal ensemble code over time. *eLife* **6**, e22177 (2017).
- Rubin, A. et al. Revealing neural correlates of behavior without behavioral measurements. *Nat. Commun.* **10**, 4745 (2019).
- Mack, M. L., Preston, A. R. & Love, B. C. Ventromedial prefrontal cortex compression during concept learning. *Nat. Commun.* **11**, 46 (2020).
- Farovik, A. et al. Orbitofrontal cortex encodes memories within value-based schemas and represents contexts that guide memory retrieval. *J. Neurosci.* **35**, 8333–8344 (2015).
- Jones, B. & Mishkin, M. Limbic lesions and the problem of stimulus–reinforcement associations. *Exp. Neurol.* **36**, 362–377 (1972).
- Jones, J. L. et al. Orbitofrontal cortex supports behavior and learning using inferred but not cached values. *Science* **338**, 953–956 (2012).
- Wimmer, G. E. & Shohamy, D. Preference by association: how memory mechanisms in the hippocampus bias decisions. *Science* **338**, 270–273 (2012).
- Wilson, R. C., Takahashi, Y. K., Schoenbaum, G. & Niv, Y. Orbitofrontal cortex as a cognitive map of task space. *Neuron* **81**, 267–279 (2014).
- Constantinescu, A. O., O'Reilly, J. X. & Behrens, T. E. J. Organizing conceptual knowledge in humans with a gridlike code. *Science* **352**, 1464–1468 (2016).
- Schuck, N. W., Cai, M. B., Wilson, R. C. & Niv, Y. Human orbitofrontal cortex represents a cognitive map of state space. *Neuron* **91**, 1402–1412 (2016).



**Fig. 5 | Acceleration of behavioural and neural changes across problems.**

**a**, Poke latencies for the first 5 sequence blocks on day 1 (problem (prob.) 1:  $n = 9$  rats; problem 5:  $n = 6$  rats) and all 20 sequence blocks on day 15 (problem 1:  $n = 6$  rats; problem 5:  $n = 6$  rats), delineated by discounted future reward. Each block contains all 24 trial types.  $r$  and  $P$ , Pearson correlation between day 1 and day 15. Data are mean  $\pm$  s.e.m. **b**, Correlation between poke latencies (sorted as in **a**) on day 1 (5-block moving window; step size = 1 block) and day 15 (fixed 20 blocks) for each of the 5 odour problems. Data are mean  $\pm$  s.e.m. **c**, Neural dimensionality

compression over time for each of the 5 odour problems ( $n = 500$  repeats).

Dim. red. index, dimensionality reduction index—calculated as normalized percentage of variance explained by the first three LCs. Data are mean  $\pm$  s.d.

**d**, Schema evolution measured how quickly the confusion matrix obtained through cross-subject decoding analysis on any day became similar to that on day 15 over training for each of the 5 odour problems ( $n = 500$  repeats). Data are mean  $\pm$  s.d. Statistics are presented in Supplementary Table 7.

23. Garvert, M. M., Dolan, R. J. & Behrens, T. E. A map of abstract relational knowledge in the human hippocampal-entorhinal cortex. *eLife* **6**, e17086 (2017).
24. Behrens, T. E. J. et al. What is a cognitive map? Organizing knowledge for flexible behavior. *Neuron* **100**, 490–509 (2018).
25. Gardner, M. P. H. & Schoenbaum, G. The orbitofrontal cartographer. Preprint at <https://doi.org/10.31234/osf.io/4mrxxy> (2020).
26. Gallagher, M., McMahan, R. W. & Schoenbaum, G. Orbitofrontal cortex and representation of incentive value in associative learning. *J. Neurosci.* **19**, 6610–6614 (1999).
27. Takahashi, Y. K. et al. Neural estimates of imagined outcomes in the orbitofrontal cortex drive behavior and learning. *Neuron* **80**, 507–518 (2013).
28. Stalnaker, T. A., Cooch, N. K. & Schoenbaum, G. What the orbitofrontal cortex does not do. *Nat. Neurosci.* **18**, 620–627 (2015).

29. Schoenbaum, G., Nugent, S. L., Saddoris, M. P. & Setlow, B. Orbitofrontal lesions in rats impair reversal but not acquisition of go, no-go odor discriminations. *Neuroreport* **13**, 885–890 (2002).
30. Gardner, M. P. H., Conroy, J. S., Shaham, M. H., Styer, C. V. & Schoenbaum, G. Lateral orbitofrontal inactivation dissociates devaluation-sensitive behavior and economic choice. *Neuron* **96**, 1192–1203.e4 (2017).

**Publisher's note** Springer Nature remains neutral with regard to jurisdictional claims in published maps and institutional affiliations.

© The Author(s), under exclusive licence to Springer Nature Limited 2020



## Quantification and statistical analyses

The number of rats and the number of neurons were not predetermined by any statistical methods but are comparable to those reported in previous publications from our and other labs<sup>6,8,31–33</sup>. All data were analysed using MATLAB (2019a; MathWorks).

## Peri-event spike dynamics

Each trial was divided into six epochs associated with different task events: light, poke, odour, unpoke, choice and outcome. On rewarded trials, the time of well-entry was labelled as choice. Outcome was at the time of reward delivery. On non-rewarded trials, the end of the 2-s window for responding was labelled as choice and a time point 1.5 s after the choice as outcome. Behavioural performance was quantified by the percent of trials on which the rats responded correctly (%correct), their reaction time from the odour port to the fluid well (reaction time), and the latency with which they initiated a trial after light onset (poke latency). The spike train for each isolated single unit was aligned to the onset of each task event for the calculation of a peri-event time histogram (PETH). Pre-event time was set to be 200 ms, and post-event time 600 ms. Spike number was counted with a bin = 100 ms. A Gaussian kernel ( $\sigma = 50$  ms) was used to smooth the PETH on each trial. The PETH of each neuron on each task event consisted of 480 trials (rows) and 8 time points (columns).

For neural ensemble analyses, we concatenated PETHs of all neurons across four task epochs (light, poke, odour, unpoke), which resulted in a matrix,  $X \in \mathbb{R}^{M \times T}$ , where  $M$  is the number of trials (480 trials), and  $T$  is the number of concatenated neurons across time (number of neurons  $\times$  4 epochs  $\times$  8 time points). For each repeat of neural ensemble analyses ( $n = 500$  repeats), the trial order within each trial type (24 trial types) for each neuron was shuffled to generate a pseudo-ensemble, which also removes the temporal correlation between neurons within the same trial type.

## Dimensionality reduction

To reduce the dimensionality of the neural data, we used ICA (MATLAB toolbox: GroupICATv.4.0b; <https://trendscenter.org/software/gift/>). ICA is a blind source-separation technique that attempts to decompose an observed multivariate signal into independent source components, which is commonly used as a dimensionality reduction tool to obtain a low-dimensional representation of high-dimensional original data<sup>34–37</sup>. ICA was implemented on a subspace resulted from a principal component analysis (PCA) to reduce the effect of noise.

For the neural data  $X \in \mathbb{R}^{M \times T}$ , where  $M$  is the number of trials ( $M = 480$ ), and  $T$  is the number of concatenated neurons, we first ran a PCA on the trial dimension to extract a signal subspace  $Y \in \mathbb{R}^{N \times T}$ , where  $N$  is the number of principal components (PCs) used for further analyses ( $N = 100$ ). The eigenvector matrix is denoted as  $V \in \mathbb{R}^{M \times N}$ . The noiseless ICA model can be written as  $Y = AS$ , where  $A \in \mathbb{R}^{N \times N}$  denotes the mixing matrix and  $S \in \mathbb{R}^{N \times T}$  denotes the latent source matrix. We used the Infomax<sup>38</sup> (<https://trendscenter.org/software/gift/>), a widely used ICA algorithm, to estimate a demixing matrix  $W \in \mathbb{R}^{N \times N}$  such that the components of the estimated source matrix  $\hat{S} \in \mathbb{R}^{N \times T}$  are statistically independent.  $\hat{S}$  is computed as  $\hat{S} = WY$ . The estimated mixing matrix  $\hat{A} \in \mathbb{R}^{N \times N}$  is the inverse of  $W$ :  $\hat{A} = W^{-1}$ . Back-reconstruction was performed on  $\hat{A}$  with the previous PCA transformation to generate  $B \in \mathbb{R}^{M \times N}$ :  $B = V^T \hat{A}$ , where  $(\cdot)^T$  denotes the transpose of the Moore–Penrose pseudo-inverse of a matrix. Each column of  $B$ , representing the weights of the corresponding estimated source  $\hat{S}$ , is referred to as the trial covariation. The trial covariation matrix  $B$  was used as a low-dimensional representation of the high-dimensional neural data.

Owing to the variability in the solution space of the ICA algorithms, we ran the ICA on each dataset 20 times and selected the most consistent run by using an algorithmic consistency metric based on the cross-inter-symbol interference (cross-ISI)<sup>39</sup>. The ISI is a global metric for performance evaluation but only when the ground-truth is known. A smaller ISI between a single run and the ground truth means the

estimation is closer to the ground truth. The metric cross-ISI has been developed to overcome the challenge when ground truth is not available for real-world data. In brief, the current run is assumed as the ground truth, the cross-ISI of the current run is computed as an average of all ISIs between the current run and other runs. The run with the lowest cross-ISI (that is, most consistent run) was selected for further analysis.

## Representational dissimilarity analysis

An LDA was applied to the low-dimensional representation of the neural data,  $B \in \mathbb{R}^{M \times N}$ . The LDA finds the components in the underlying subspace that best separate classes. Suppose  $x_m \in \mathbb{R}^{N \times 1}$ ,  $m = 1, 2, 3, \dots, M$ , is a vector of the neural data  $B$  on trial  $m$  ( $M = 480$  trials,  $N = 100$ ),  $c$  is the number of classes ( $c = 24$  trial types),  $\mu_c$  is the mean for each class,  $\bar{x}$  is the overall mean. The within-class scatter matrix  $S_w$  and between-class scatter matrix  $S_B$  are defined by:

$$S_w = \sum_c \sum_{i \in c} (x_i - \mu_c)(x_i - \mu_c)^T,$$

$$S_B = \sum_c (\bar{x} - \mu_c)(\bar{x} - \mu_c)^T$$

LDA tries to maximize the ratio of between-class variance and within-class variance of the linearly transformed data:

$$\hat{W} = \arg \max [(W^T S_B W) / (W^T S_w W)],$$

where  $W$  is the argument and  $\hat{W} \in \mathbb{R}^{N \times N}$  is the resulted coefficient matrix for the LDA transformation. The LDA components are computed as  $B_{LDA} = B \hat{W}$ , where  $B_{LDA} \in \mathbb{R}^{M \times N}$ .

The Mahalanobis distance was used to measure the distance or dissimilarity between each pair of trial-type means in the LDA subspace with  $B_{LDA}$ . The analysis was repeated 500 times and the averaged dissimilarity matrix was presented as heat map in the main figure. The 24 trial types were plotted in a 2D scatter plot through the classic multidimensional scaling (also known as principal coordinates analysis; MATLAB function: `cmdscale`) method. For clustering analysis, an agglomerative hierarchical cluster tree was generated with the unweighted average distance method. The clustering results were plotted as dendrograms.

## Dimensionality comparison

To estimate task-related neural dimensionality, we examined the distribution of variance on the LDA components<sup>15</sup>. Lower neural dimensionality means fewer neural components should be required to represent a fixed amount of the variance and a fixed number of components should be able to represent a larger amount of the variance. To test for this, we calculated variance explained by each neural component, and asked two questions: (1) How much variance can be explained by the first three neural components? (2) How many neural components are needed to explain 80% variance? To make comparisons of dimensionality reduction between problems, we (1) randomly selected 140 neurons from each odour problem on each day for each repeated analysis; and (2) normalized the variance explained by the first three neural components across days (that is, the explained variance on each day was divided by the peak variance found across days to ensure a 0–1 scale.) and denoted the numbers as the 'dimensional reduction index'. A higher number means lower dimensionality.

## Manifold alignment

We used the CCA to align neural activities recorded in different sessions in a lower-dimensional space. CCA uses second-order statistics (that is, cross-covariance) to discover the relationships between two sets of multidimensional variables, by finding two sets of respective linear transformations (that is, canonical coefficients), such that the correlation between two projected variables (that is, canonical variables) is maximized. CCA has been used to align neural activities previously<sup>8,40,41</sup>.



# Article

Consider  $B^{(1)} \in \mathbb{R}^{M \times N}$  and  $B^{(2)} \in \mathbb{R}^{M \times N}$  are the low-dimensional representations of the original neural data from two problems after the ICA ( $M = 480$  trials;  $N = 100$ ). To avoid overfitting of CCA, we performed PCA on  $B^{(1)}$  and  $B^{(2)}$  along the neuron dimension, which resulted in  $C^{(1)} \in \mathbb{R}^{M \times L}$  and  $C^{(2)} \in \mathbb{R}^{M \times L}$ , respectively, where  $L$  is the number of PCs ( $L = 30$ ) retained. CCA tries to find pairs of canonical coefficient vectors  $W^{(1)} \in \mathbb{R}^{L \times L}$  and  $W^{(2)} \in \mathbb{R}^{L \times L}$ , such that the pairwise correlations between  $U^{(1)} = C^{(1)}W^{(1)}$  and  $U^{(2)} = C^{(2)}W^{(2)}$  are maximized. Columns in  $U^{(1)} \in \mathbb{R}^{M \times L}$  and  $U^{(2)} \in \mathbb{R}^{M \times L}$ , ordered by paired correlation coefficients, are canonical variables or canonical components (CCs), which were used to represent aligned neural activities between problems.

## Classification analyses

We used the LDA for multiclass classification and support vector machine (SVM; MATLAB toolboxes: libsvm-3.22 and ndt.1.0.4)<sup>42,43</sup> for binary classification. In general, classification accuracy was assessed by a leave-one-out cross-validation procedure. Specifically, on each repeat, one trial from each trial type was left out for future testing, and all the other trials were used to create the classifier. For repeats, the trial order for each neuron was shuffled within the same trial type. The trial-order shuffling was repeated 500 times. For each time of trial-order shuffling, the leave-one-out cross-validation was repeated 200 times to estimate the decoding accuracy. The mean decoding accuracy for each trial type as shown in the confusion matrix was the mean across 500 runs (corresponding to 500 times of trial-order shuffling). The statistical significance of the mean decoding accuracy was determined by the 95% confidence interval estimated by running the same decoding process with label-shuffled data.

For each repeat in the cross-problem classification, the five odour problems were randomly assigned with numbers 1 to 5 (these numbers do not indicate the actual problem order). The training set came from one pair of odour problems (numbers 1 and 2), and the test set came from another pair (3 and 4). The neural data from odour problem 5 was randomly combined with odour problem 1 or 2. For the training set, the original neural firing data from the two odour problems (1 and 2) were separately concatenated along the neuron dimension and subjected to dimensionality reduction (ICA + PCA) as described above, which resulted in two matrices  $B^{(1)} \in \mathbb{R}^{M \times L}$  and  $B^{(2)} \in \mathbb{R}^{M \times L}$  ( $M = 480$  trials,  $L = 30$  PCs). The manifold alignment was performed on the two matrices to obtain aligned neural activities  $U^{(1)} \in \mathbb{R}^{M \times L}$  and  $U^{(2)} \in \mathbb{R}^{M \times L}$ .  $U^{(1)}$  and  $U^{(2)}$  are concatenated along the neural dimension as the training data. With the same approach,  $U^{(3)} \in \mathbb{R}^{M \times L}$  and  $U^{(4)} \in \mathbb{R}^{M \times L}$  are the results of dimensionality reduction and manifold alignment performed on another pair of odour problems, 3 and 4.  $U^{(3)}$  and  $U^{(4)}$  were concatenated as the test data. If the correlation coefficient between two paired canonical components in the training and tests was negative, the sign of the component in the test set would be flipped. The cross-rat classification followed the same procedure except that the rats, instead of the odour problems, were divided into four groups (1, 2, 3 and 4). Groups 1 and 2 were used to generate the training set, and groups 3 and 4 were used to generate the test set. For cross-rat classification within each problem, 50 neurons were randomly selected from each rat with replacement for each repeat on each day.

For the correlation analyses between the CCA-aligned neural activities and three task features (current value, odour overlap and positional alternation), the dataset was not split into training and test sets. Specifically, for each repeat, the 5 problems (or 9 rats) were randomly divided into two groups (1 and 2). We applied the same dimensional reduction and manifold alignment process described above on the split datasets 1 and 2, which resulted in aligned neural activities:  $U^{(1)} \in \mathbb{R}^{M \times L}$  and  $U^{(2)} \in \mathbb{R}^{M \times L}$ . The Pearson correlations between the first 13 canonical components in  $U^{(1)}$  and the three task features were calculated.

## Control analysis for cross-problem and cross-subject decoding

The control analysis was intended to mimic a control experiment, in which the components (number of odours, number of trials, likelihood of reward, and so on) remained the same across odour problems but the

task structure—the sequence of odours and rewards—differed. In such a control experiment, odours would be presented randomly, with or without reward as in the current experiment, but without any sequence structure. Under these conditions, the trial types within each problem should remain decodable, but cross-problem and cross-subject classifications should fail. To approximate this condition with the current data, we shuffled the order of trial types within each problem before the manifold alignment, which effectively, although not fully, disrupted the sequence structure while leaving other components intact, and then we performed the above analyses to decode the trial types across problems and across subjects.

## Reporting summary

Further information on research design is available in the Nature Research Reporting Summary linked to this paper.

## Data availability

The dataset used in this study is available at <https://doi.org/10.17605/OSF.IO/5MH4Y>.

## Code availability

The MATLAB code used in this study is available at <https://doi.org/10.17605/OSF.IO/5MH4Y>.

1. Hirokawa, J., Vaughan, A., Masset, P., Ott, T. & Kepecs, A. Frontal cortex neuron types categorically encode single decision variables. *Nature* **576**, 446–451 (2019).
2. Nogueira, R. et al. Lateral orbitofrontal cortex anticipates choices and integrates prior with current information. *Nat. Commun.* **8**, 14823 (2017).
3. Young, J. J. & Shapiro, M. L. Dynamic coding of goal-directed paths by orbital prefrontal cortex. *J. Neurosci.* **31**, 5989–6000 (2011).
4. Calhoun, V. D., Adali, T., Pearlson, G. D. & Pekar, J. J. A method for making group inferences from functional MRI data using independent component analysis. *Hum. Brain Mapp.* **14**, 140–151 (2001).
5. Hyvärinen, A. & Oja, E. Independent component analysis: algorithms and applications. *Neural Netw.* **13**, 411–430 (2000).
6. McKeown, M. J., Hansen, L. K. & Sejnowski, T. J. Independent component analysis of functional MRI: what is signal and what is noise? *Curr. Opin. Neurobiol.* **13**, 620–629 (2003).
7. Wang, J. & Chang, C.-I. Independent component analysis-based dimensionality reduction with applications in hyperspectral image analysis. *IEEE Trans. Geosci. Remote Sens.* **44**, 1586–1600 (2006).
8. Bell, A. J. & Sejnowski, T. J. An information-maximization approach to blind separation and blind deconvolution. *Neural Comput.* **7**, 1129–1159 (1995).
9. Long, Q. et al. Consistent run selection for independent component analysis: application to fMRI analysis. In *IEEE International Conference on Acoustics, Speech and Signal Processing* 2581–2585 (2018).
10. Akhonda, M. A. B. S., Levin-Schwartz, Y., Bhinghe, S., Calhoun, V. D. & Adali, T. Consecutive independence and correlation transform for multimodal fusion: application to EEG and fMRI data. In *IEEE International Conference on Acoustics, Speech and Signal Processing* 2311–2315 (2018).
11. Jia, C. et al. C-ICT for discovery of multiple associations in multimodal imaging data: application to fusion of fMRI and DTI data. In *53rd Annual Conference on Information Sciences and Systems* 1–5 (2019).
12. Chang, C.-C. & Lin, C.-J. LIBSVM: A library for support vector machines. *ACM Trans. Intell. Syst. Technol.* **2**, 27 (2011).
13. Zhang, Y. et al. Object decoding with attention in inferior temporal cortex. *Proc. Natl Acad. Sci. USA* **108**, 8850–8855 (2011).

**Acknowledgements** The authors thank the NIDA IRP histology core for technical assistance with histology. This work used the computational resources of the NIH HPC Biowulf cluster (<http://hpc.nih.gov>). This work was supported by a grant from the NIDA (K99DA049888 to J.Z.) and the Intramural Research Program at NIDA (ZIA-DA000587 to G.S.). The opinions expressed in this article are the authors' own and do not reflect the view of the NIH or DHHS.

**Author contributions** J.Z. and G.S. designed the experiments; J.Z. and M.M.-C. collected the data; J.Z. analysed the data with advice and technical assistance from C.J., M.P.H.G. and W.Z.; and J.Z. and G.S. wrote the manuscript with input from the other authors.

**Competing interests** The authors declare no competing interests.

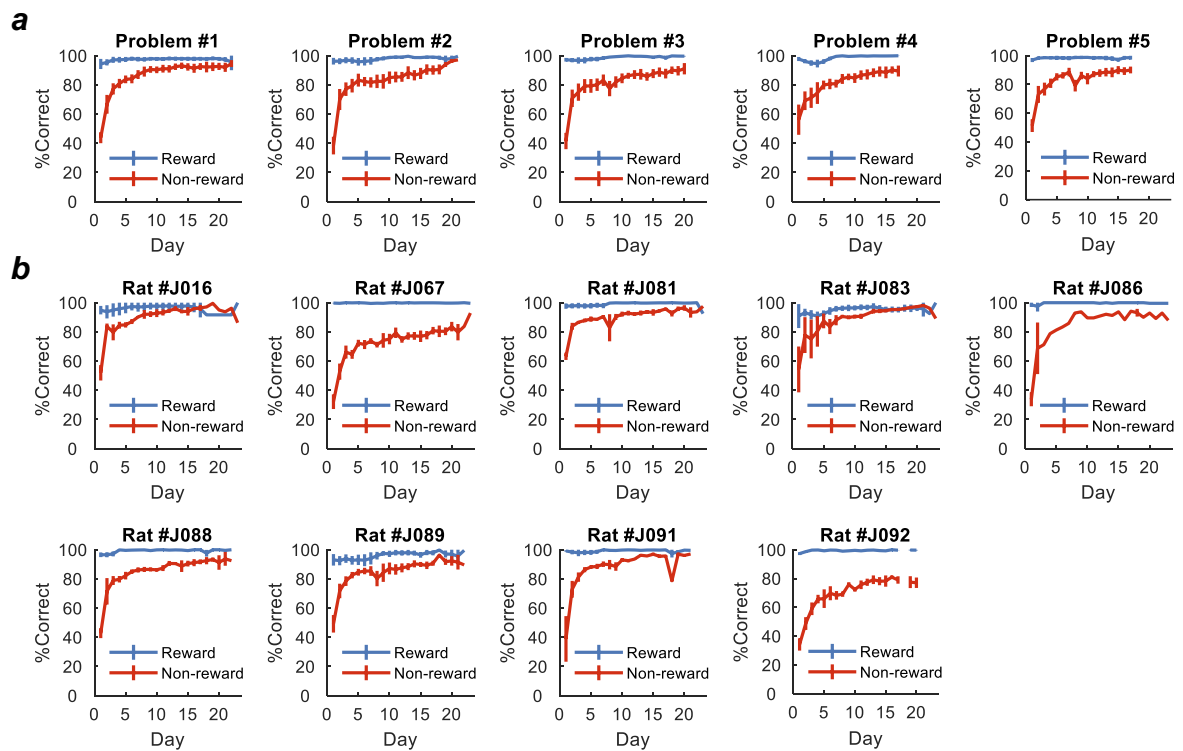
## Additional information

**Supplementary information** is available for this paper at <https://doi.org/10.1038/s41586-020-03061-2>.

**Correspondence and requests for materials** should be addressed to J.Z. or G.S.

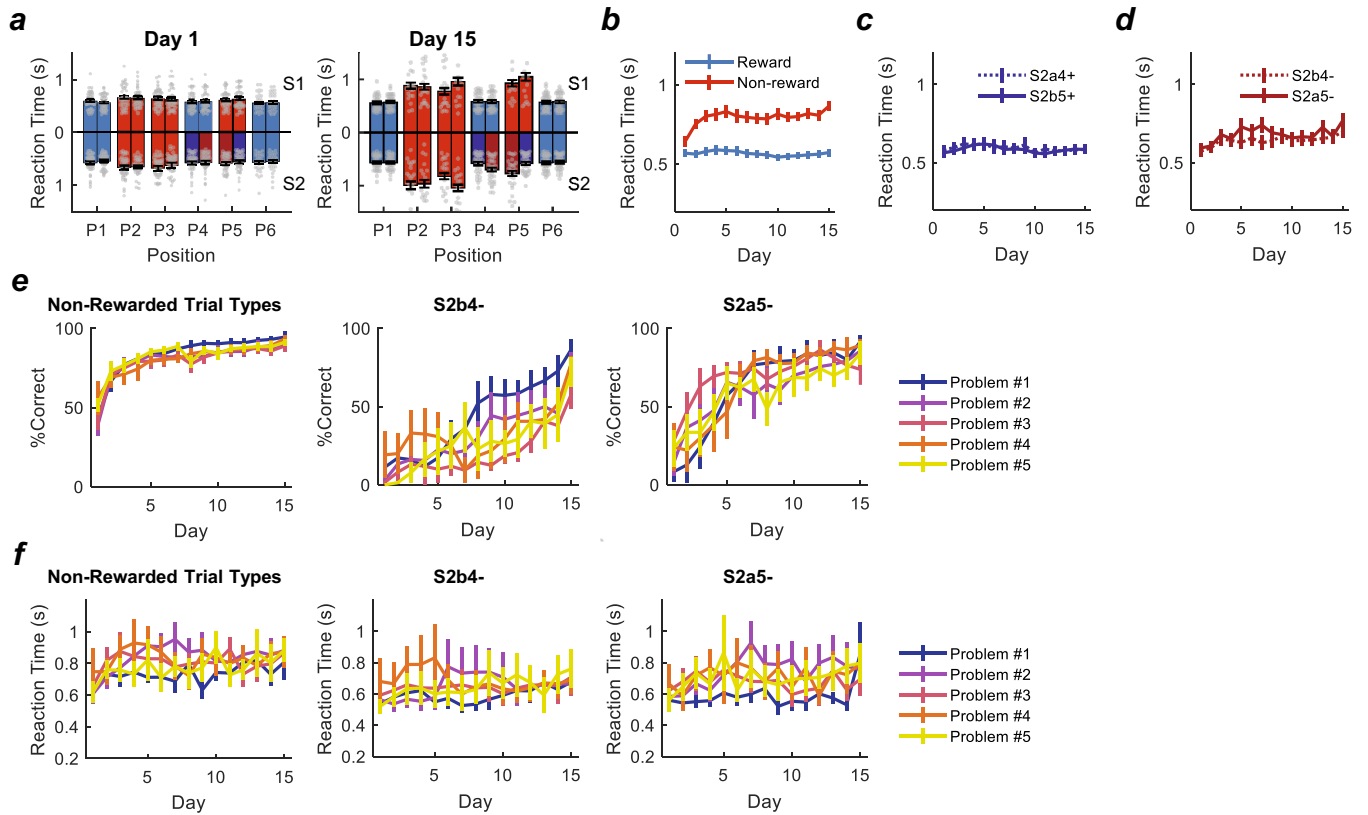
**Peer review information** Nature thanks Alison Preston and the other, anonymous, reviewer(s) for their contribution to the peer review of this work. Peer reviewer reports are available.

**Reprints and permissions information** is available at <http://www.nature.com/reprints>.



**Extended Data Fig. 1 | Behavioural performance on each problem and of each rat. a, b,** The behavioural learning was assessed by percent of correct (%correct) on rewarded trials ('Go' trials; blue) and non-rewarded trials ('No-Go' trials; red) across training days. Each rat accomplished one session each day. The data was plotted for each problem across rats (**a**;  $n = 9$  rats) or each rat across problems (**b**;  $n = 5$  odour problems). The days shown on the x-axis are the actual training days. Rats showed stable behavioural performance after day 15 and not all rats finished 23 days of training. To align the learning process

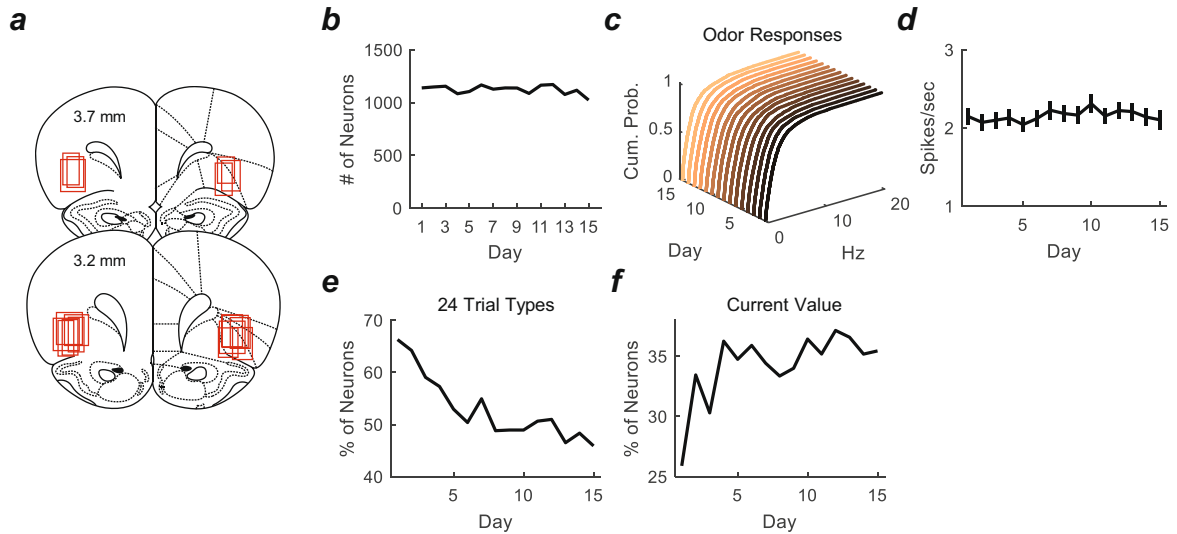
between problems for further data analyses, we truncated the learning on each odour problem to 15 sessions, consisting of data from the first 14 sessions of learning plus data from the session with the best performance thereafter. Note that the training day of the last sessions with the best performance was referred to as 'day 15', except in this figure. Data are presented as mean  $\pm$  s.e.m. A two-way ANOVA was performed for each panel (Reward  $\times$  Day;  $R \times D$ ). See Supplementary Table 8 for detailed statistics.



**Extended Data Fig. 2 | Reaction time and %correct during learning.**

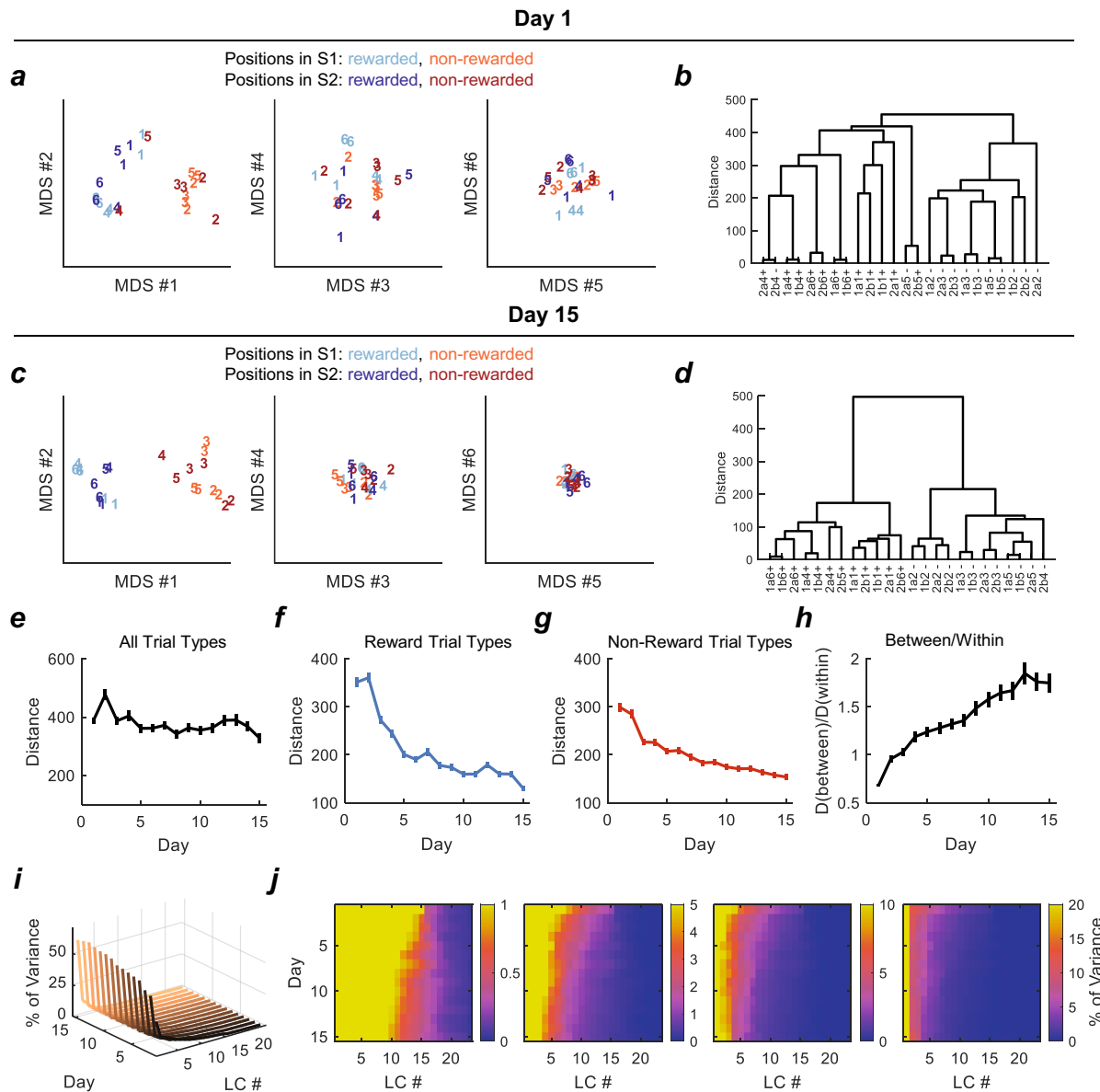
**a**, Reaction time on day 1 and day 15. The reaction time measured the time period from odour port exit ('unpoke') to water well entry ('choice'). The data presented here only included correct rewarded trials and incorrect non-rewarded trials. Reaction times on trial types in sequence S1 are plotted upwards, and those on trial types in sequence S2 are plotted downwards. Darker colours highlight four trial types that require rats to remember and use past sequences to perform correctly.  $n = 37$  and  $36$  sessions on day 1 and day 15, respectively. Data are presented as mean  $\pm$  s.e.m. **b**, The changes of reaction time on correct rewarded trials and incorrect non-rewarded trials during

learning. **c, d**, The changes of reaction time during learning on the two pairs of trial types (**c**: S2a4+ and S2b5+; **d**: S2b4- and S2a5-). **e**, %Correct on all non-rewarded trial types and two (S2b4- and S2a5-) that required the recall of odour sequences. **f**, Reaction time on all non-rewarded trial types and two (S2b4- and S2a5-) that required the recall of odour sequences. Only incorrect trials (rats making a 'Go' choice on non-rewarded trials) were included. **b-f**,  $n = 37, 40, 40, 38, 38, 39, 38, 39, 39, 38, 39, 40, 36, 38, 36$  sessions from day 1 to day 15. Data are presented as mean  $\pm$  s.e.m. **a-d**, Two-way ANOVAs (Trial Type  $\times$  Day). **e, f**, Two-way ANOVAs (Problem  $\times$  Day). See Supplementary Table 9 for detailed statistics.



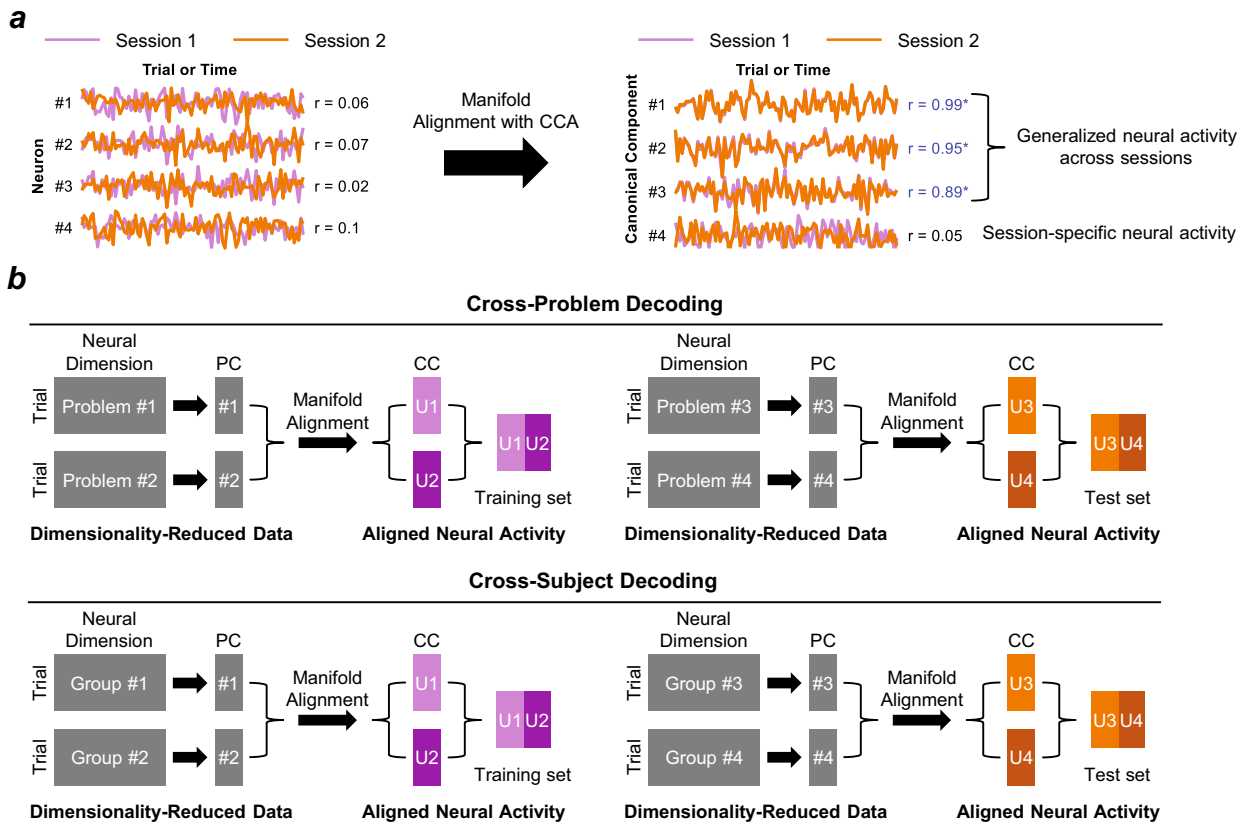
**Extended Data Fig. 3 | Histology and single-unit analyses.** **a**, Red squares show the reconstructed recording sites ( $n = 18$  recording sites from 9 rats). Two electrode bundles were implanted bilaterally in OFC of each rat. Each electrode bundle consisted of 16 single wires. **b**, The number of neurons recorded across days. **c**, Cumulative distribution of neurons that showed different firing rates to all the odour stimuli. **d**, The averaged firing rates of all the neurons to all the odour stimuli. One-way ANOVA with the factor of Day:  $F(14,16828) = 0.39$ ,  $P = 0.98$ . See **b** and Supplementary Tables 1 and 2 for  $n =$  number of neurons on

each day. Data are presented as mean  $\pm$  s.e.m. **e**, The percent of neurons that were significantly selective to at least one of the 24 trial types (one-way ANOVA;  $p$  values were adjusted by the Benjamini-Hochberg procedure to control the false discovery rate; BH-FDR;  $P < 0.05$  was used to determine if one neuron was significantly selective to 24 trial types). **f**, The percent of neurons that showed selectivity to reward vs. non-reward trials (one-way ANOVA; BH-FDR;  $P < 0.05$  was used to determine if one neuron was significantly selective to the current value).



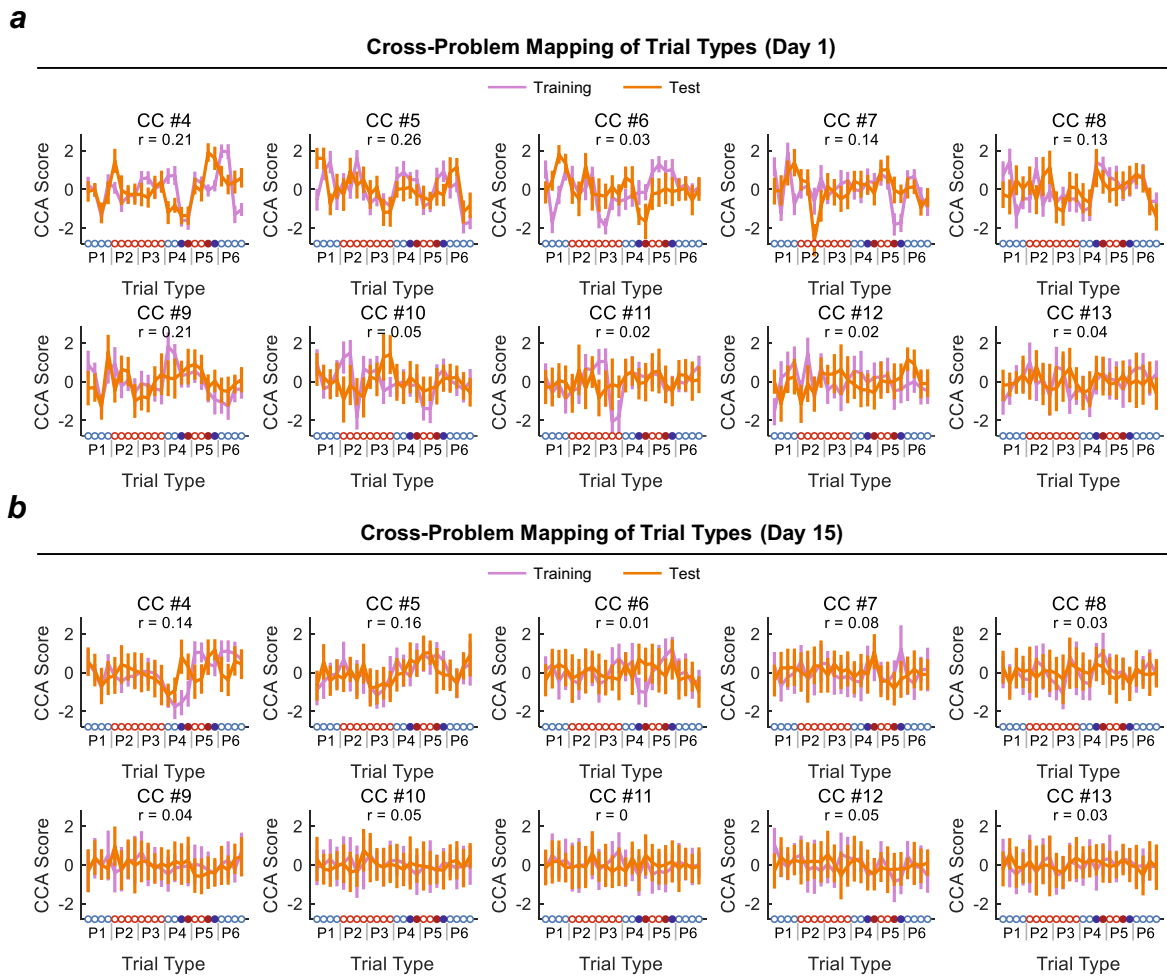
**Extended Data Fig. 4 | Changes of activity space during learning.** **a**, Using the classical multidimensional scaling (cMDS) to visualize the dissimilarity matrix shown in Fig. 2. The coloured numbers (1–6) indicate positions (P1–P6). Light blue and light red: rewarded and non-rewarded positions in S1, respectively; dark blue and dark red: rewarded and non-rewarded positions in S2, respectively. **b**, Hierarchical clustering of 24 trial types based on population neural activities on day 1. The dissimilarity matrix in Fig. 2 was used to construct a hierarchical clustering tree by an unweighted average linkage method. The clustering results were shown in dendrograms. **c**, The MDS plots to visualize the dissimilarity matrix on day 15 with the same colour code as in **a**. **d**, The hierarchical clustering analysis on day 15. **e**, Averaged pair-wise distances between 24 trial types. One-way ANOVA (factor: Day):

$F(14,7485) = 2279.2, P = 0, n = 500$  repeats. **f**, Averaged pair-wise distances within reward trial types. One-way ANOVA (factor: Day):  $F(14,7485) = 4.4 \times 10^{-4}, P = 0, n = 500$  repeats. **g**, Averaged pair-wise distances within non-reward trial types. One-way ANOVA (factor: Day):  $F(14,7485) = 1.9 \times 10^{-4}, P = 0, n = 500$  repeats. **h**, The ratio of averaged pair-wise distance between and within reward vs. non-reward trials. One-way ANOVA (factor: Day):  $F(14,7485) = 1.1 \times 10^{-4}, P = 0, n = 500$  repeats. **e–h**, Data are presented as mean  $\pm$  s.d. **i**, Percent of explained variance across linear discriminant components (LCs). **j**, Heatmap plots of variance distributions across LCs and training days. Warmer colour mean higher percent of variance explained by certain LC, and vice versa. Four panels were used with different coloured bar scales (from left to right: 0–1; 0–5; 0–10; 0–20) to better visualize the same result.



**Extended Data Fig. 5 | Obtaining training and test sets.** **a**, Simulation of manifold alignment with the canonical correlation analysis (CCA). Two sets of Gaussian signals ( $n = 4$  for each set) were generated to represent two sets of neurons recorded from two respective task sessions. Correlations of paired neurons between sessions were controlled ( $r = 0.99, 0.9, 0.85, 0.01$ ; Pearson correlation). The neurons between sessions were misaligned such that the correlations between paired neurons were low (shown in the left;  $P = 0.58, 0.52, 0.86, 0.35$ ; Pearson correlation) to mimic the misalignment of neurons during experimental recording sessions. After the manifold alignment, the recovered neural components (that is, canonical components) were aligned ( $P = 1.8 \times 10^{-94}, 7.0 \times 10^{-34}, 3.5 \times 10^{-27}, 0.82$ ;  $*P < 0.05$  shown in blue; Pearson correlation). The aligned components (#1, #2, and #3) represent the generalized neural activity across sessions, while the non-correlated

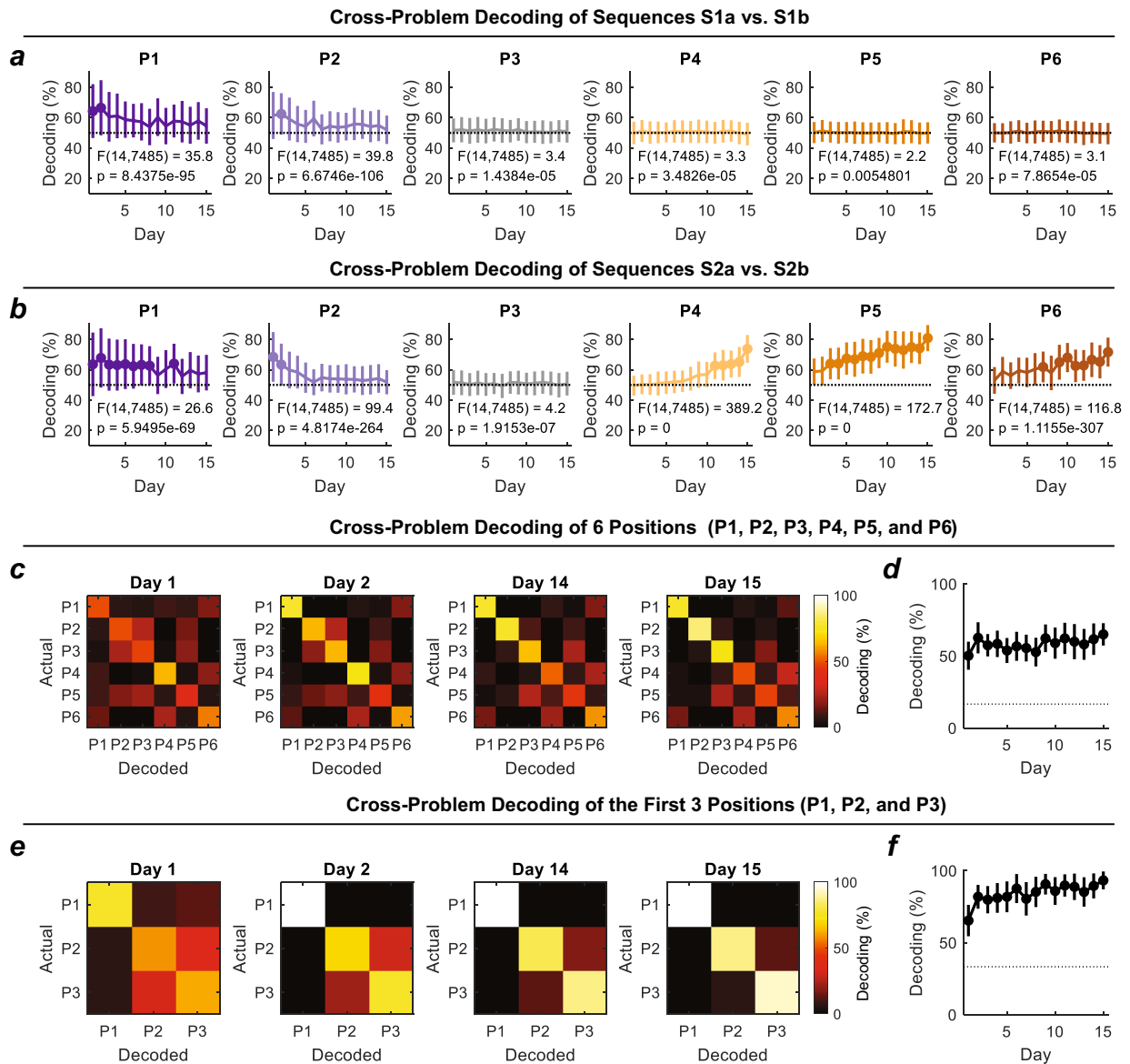
components (#4) represent session-specific neural activity. **b**, For cross-problem decoding, neurons recorded from different pairs of odour problems were separately subjected to dimensionality reduction. The resulted two matrices ( $480 \text{ trials} \times 30 \text{ principal components}$ ; PCs) were aligned through CCA to obtain two correlated matrices (U1 and U2 for training; U3 and U4 for testing;  $480 \text{ trials} \times 30 \text{ CCs}$  for each matrix), which were concatenated ( $480 \text{ trials} \times 60 \text{ CCs}$ ) for further use as either a training (U1U2) or test (U3U4) set. Since there were 5 odour problems in total, for each repeat, the left one was combined with one of the two problems for the training set. For cross-subject decoding, the 9 rats were randomly separated into 4 groups. Groups 1 and 2 were used to obtain the training set (U1U2), while Groups 3 and 4 were used to obtain the test set (U3U4).



**Extended Data Fig. 6 | Paired canonical components between problems.**

**a, b**, This figure is an extension of Fig. 3a. Each panel plots one pair of canonical components (CCs), one from the training set and another from the test set, starting with CC4, the first CC not plotted in the main text figure. To obtain the training set, CCA was performed on a pair of problems (for example, problem 1 and problem 2) to identify commonalities in the aligned neural subspaces. Similarly, to obtain the test set, the CCA was performed on a different pair of problems (for example, problem 3 and problem 4). The scores of paired CCs (one from the training set and the other from the test set) were plotted against

the 24 trial types for both day 1 (**a**) and day 15 (**b**). The 24 trial types are ordered as P1(S1a,S1b,S2a,S2b), P2(S1a,S1b,S2a,S2b), P3(S1a,S1b,S2a,S2b), P4(S1a,S1b,S2a,S2b), P5(S1a,S1b,S2a,S2b), P6(S1a,S1b,S2a,S2b). Blue circles indicate positive trial types, and red circles indicate negative trial types. Four trial types are highlighted with filled circles (S2a4, S2b4, S2a5, and S2b5, in this order). The  $r$  in each panel is the correlation coefficient between paired CCs from the training and test sets ( $n = 480$  trials for each CC; Pearson correlation). Data are presented as mean  $\pm$  s.d.

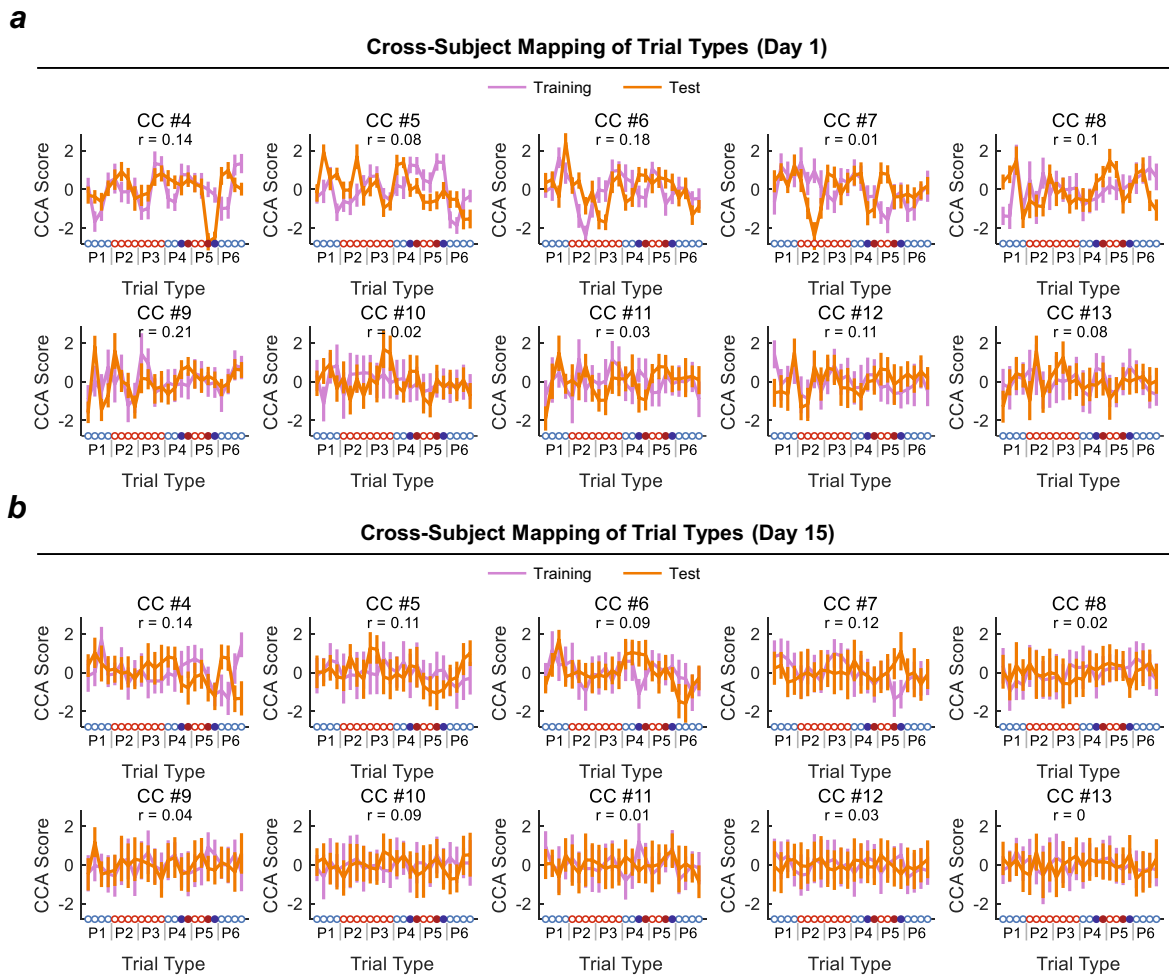


**Extended Data Fig. 7 | Cross-problem decoding of sequences and positions.**

**a, b**, Cross-problem decoding of sequences S1a vs. S1b (**a**) and S2a vs. S2b (**b**) at six positions (P1 – P6). Training and test sets were generated with the same approach described in Extended Data Fig. 5b with all 480 trials. For decoding analysis in each panel, only particular trial types (for example, S1a1 vs. S1b1) were selected. A one-way ANOVA (factor: Day) was performed and shown in each panel. **c**, Confusion matrices of 6 positions (P1 – P6) as a result of the cross-problem decoding of these positions. Trial types within the same position (for example, S1a, S1b, S2a, and S2b) were lumped together. **d**, Cross-problem decoding of positions during learning. A one-way ANOVA was used to test the effect of learning:  $F(14,7485) = 85.4, P = 3 \times 10^{-228}$ . **e**, Confusion

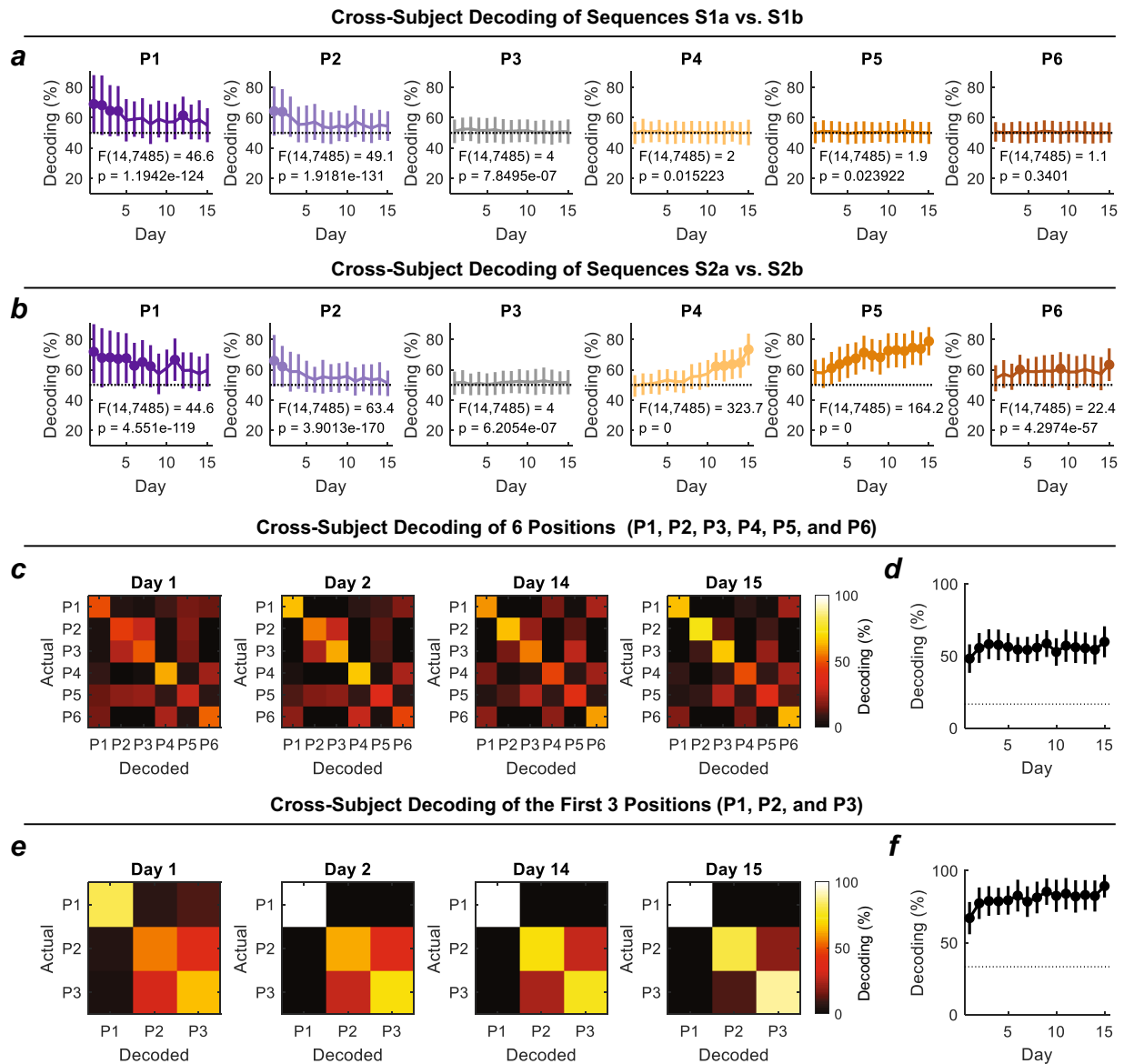
matrices of the first three positions (P1 – P3) as a result of the cross-problem decoding of these three positions. Note that at each one of these three positions, the current and surrounding reward availabilities across sequences are similar, while at following positions (P4 and P5), the reward availabilities in S2b are not consistent with those in other sequences (S1a, S1b, S2a). **f**, Cross-problem decoding of the first three positions during learning. A one-way ANOVA was used to test the effect of learning:  $F(14,7485) = 247.8, P = 0$ . **a, b, d, f**, The round markers indicate that the mean decoding accuracy exceeded the 95% confidence interval (CI) of decoding accuracy from the same decoding process but with shuffled trial-type labels. Dotted line: chance level.  $n = 500$  repeats. Data are presented as mean  $\pm$  s.d.





**Extended Data Fig. 8 | Paired canonical components between subjects.**  
**a, b**, This figure is an extension of Fig. 4a. Each panel plots one pair of CCs, one from the training set and another from the test set, starting with CC 4, the first CC not plotted in the main text figure. For the training set, the CCA was performed on two groups of rats (for example, rat group 1 and rat group 2) to identify commonalities in the aligned neural subspaces. For the test set, the CCA was performed on a different two groups of rats (for example, rat group 3 and rat group 4). The scores of paired CCs (one from the training set and

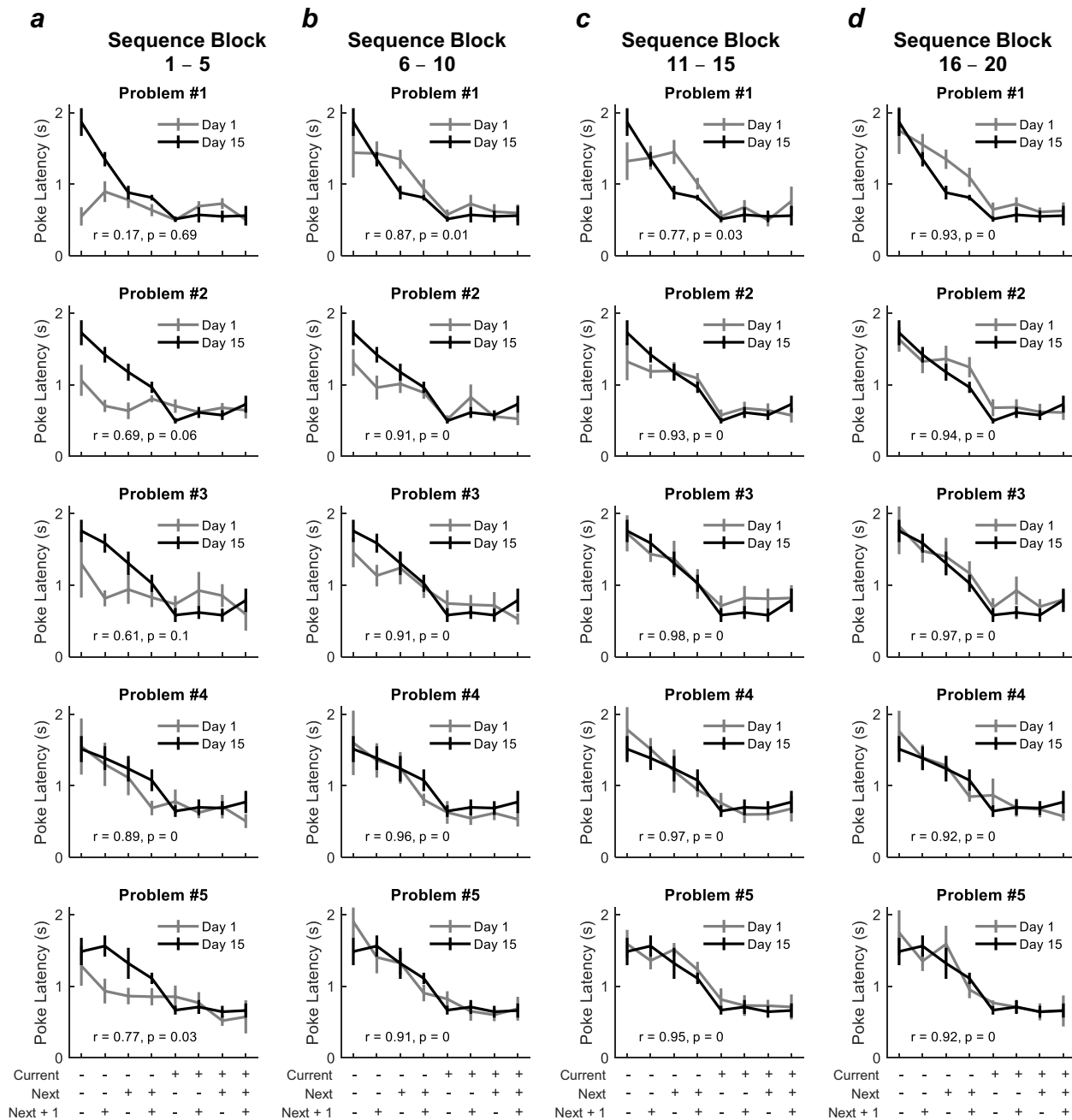
another from the test set) were plotted against the 24 trial types for both day 1 (**a**) and day 15 (**b**). The 24 trial types are ordered as P1(S1a,S1b,S2a,S2b), P2(S1a,S1b,S2a,S2b), P3(S1a,S1b,S2a,S2b), P4(S1a,S1b,S2a,S2b), P5(S1a,S1b,S2a,S2b), P6(S1a,S1b,S2a,S2b). Blue circles indicate positive trial types, and red circles indicate negative trial types. Four trial types were highlighted with filled circles (S2a4, S2b4, S2a5, and S2b5, in this order). The  $r$  in each panel is the correlation coefficient between paired CCs from the training and sets ( $n = 480$  trials for each CC; Pearson correlation). Data are presented as mean  $\pm$  s.d.



**Extended Data Fig. 9 | Cross-subject decoding of sequences and positions.**

**a, b**, Cross-subject decoding of sequences S1a vs. S1b (**a**) and S2a vs. S2b (**b**) at six positions (P1 – P6). Training and test sets were generated with the same approach described in Extended Data Fig. 5b with all 480 trials. For decoding analysis in each panel, only particular trial types (for example, S1a1 vs. S1b1) were selected. A one-way ANOVA (factor: Day) was performed and shown in each panel. **c**, Confusion matrices of 6 positions (P1 – P6) as a result of the cross-subject decoding of these positions. Trial types within the same position (for example, S1a, S1b, S2a, and S2b) were lumped together. **d**, Cross-subject decoding of positions during learning. A one-way ANOVA was used to test the effect of learning:  $F(14,7485) = 38.1, P = 3.7 \times 10^{-101}$ . **e**, Confusion matrices of the

first three positions (P1 – P3) as a result of the cross-subject decoding of these three positions. Note that at each one of these three positions, the current and surrounding reward availabilities across sequences are similar, while at following positions (P4 and P5), the reward availabilities in S2b are not consistent with those in other sequences (S1a, S1b, S2a). **f**, Cross-subject decoding of the first three positions during learning. A one-way ANOVA was used to test the effect of learning:  $F(14,7485) = 110.16, P = 3.1 \times 10^{-291}$ . **a, b, d, f**, The round markers indicate that the mean decoding accuracy exceeded the 95% confidence interval (CI) of decoding accuracy from the same decoding process but with shuffled trial-type labels. Dotted line: chance level.  $n = 500$  repeats. Data are presented as mean  $\pm$  s.d.



**Extended Data Fig. 10 | Comparisons of poke latencies sorted by discounted future reward between day 1 and day 15.** a–d, Poke latency measuring the time from the onset of the houselights ('light') to nosepoke ('poke') at the odour port, sorted according to discounted future reward across a: sequence blocks 1–5; b, sequence blocks 6–10; c, sequence blocks 11–15; d, sequence blocks 16–20 on day 1 (grey lines) compared to the poke latencies averaged across all 20 sequence blocks on day 15 (black lines). Each sequence block has 24 trials and comes from 24 trial types. Analyses were performed on

each odour problem separately (problem 1–5; from upper to lower panels). In each panel,  $r$  is the correlation coefficient between the grey and black lines and  $p$  is the  $p$ -value for the correction. Number of sessions (that is, rats) used in the analyses: problem 1 ( $n = 9$  on day 1;  $n = 6$  on day 15); problem 2 ( $n = 9$  on day 1;  $n = 8$  on day 15); problem 3 ( $n = 7$  on day 1;  $n = 8$  on day 15); problem 4 ( $n = 6$  on day 1;  $n = 7$  on day 15); problem 5 ( $n = 6$  on day 1;  $n = 7$  on day 15). Data are presented as mean  $\pm$  s.e.m.

## Reporting Summary

Nature Research wishes to improve the reproducibility of the work that we publish. This form provides structure for consistency and transparency in reporting. For further information on Nature Research policies, see [Authors & Referees](#) and the [Editorial Policy Checklist](#).

### Statistics

For all statistical analyses, confirm that the following items are present in the figure legend, table legend, main text, or Methods section.

n/a Confirmed

- The exact sample size ( $n$ ) for each experimental group/condition, given as a discrete number and unit of measurement
- A statement on whether measurements were taken from distinct samples or whether the same sample was measured repeatedly
- The statistical test(s) used AND whether they are one- or two-sided  
*Only common tests should be described solely by name; describe more complex techniques in the Methods section.*
- A description of all covariates tested
- A description of any assumptions or corrections, such as tests of normality and adjustment for multiple comparisons
- A full description of the statistical parameters including central tendency (e.g. means) or other basic estimates (e.g. regression coefficient) AND variation (e.g. standard deviation) or associated estimates of uncertainty (e.g. confidence intervals)
- For null hypothesis testing, the test statistic (e.g.  $F$ ,  $t$ ,  $r$ ) with confidence intervals, effect sizes, degrees of freedom and  $P$  value noted  
*Give  $P$  values as exact values whenever suitable.*
- For Bayesian analysis, information on the choice of priors and Markov chain Monte Carlo settings
- For hierarchical and complex designs, identification of the appropriate level for tests and full reporting of outcomes
- Estimates of effect sizes (e.g. Cohen's  $d$ , Pearson's  $r$ ), indicating how they were calculated

*Our web collection on [statistics for biologists](#) contains articles on many of the points above.*

### Software and code

Policy information about [availability of computer code](#)

Data collection

Spikes and behavioral data were collected using the Plexon MAP system v2.7.0., spike sorting using Plexon Offline Sorter v4.0.

Data analysis

Data analysis was performed using MATLAB 2019a, GroupICATv4.0b, libsvm-3.22, and ndt.1.0.4.  
Custom MATLAB code has been made available at <https://doi.org/10.17605/OSF.IO/5MH4Y>

For manuscripts utilizing custom algorithms or software that are central to the research but not yet described in published literature, software must be made available to editors/reviewers. We strongly encourage code deposition in a community repository (e.g. GitHub). See the Nature Research [guidelines for submitting code & software](#) for further information.

### Data

Policy information about [availability of data](#)

All manuscripts must include a [data availability statement](#). This statement should provide the following information, where applicable:

- Accession codes, unique identifiers, or web links for publicly available datasets
- A list of figures that have associated raw data
- A description of any restrictions on data availability

The dataset used in this work has been made available at <https://doi.org/10.17605/OSF.IO/5MH4Y>

### Field-specific reporting

Please select the one below that is the best fit for your research. If you are not sure, read the appropriate sections before making your selection.

- Life sciences       Behavioural & social sciences       Ecological, evolutionary & environmental sciences

## Life sciences study design

All studies must disclose on these points even when the disclosure is negative.

Sample size	The number of rats (n = 9) and the number of neurons (n = 1122.9 ± 41 neurons each day with all rats and problems combined) were not predetermined by any statistical methods but are comparable to those reported in previous publications in our and other labs in the field. For example, in one recent study (Hirokawa et al., Nature, 2019), 485 neurons were recorded from lateral orbitofrontal cortex (OFC) in 3 rats. Relevant publications are cited in the Methods.
Data exclusions	No animals were excluded from analysis. Unfinished recording sessions (i.e., sessions with less than 480 trials) were excluded.
Replication	Recording experiments were conducted on one group of 9 rats. Each rat finished 5 new odor problems. For analyses that required combining all rats and problems, 500 pseudo-ensembles were generated from the same dataset for replications (dimensionality comparison). For cross-problem and cross-subject analyses, problems or rats were randomly drawn and assigned to different groups for cross-validation (500 repeats). All the analyses were consistent across repeats.
Randomization	There was only one experimental group. All rats went through the same training with the initial shaping and five new odor problems.
Blinding	Not relevant because no group allocation was involved in this study.

## Reporting for specific materials, systems and methods

We require information from authors about some types of materials, experimental systems and methods used in many studies. Here, indicate whether each material, system or method listed is relevant to your study. If you are not sure if a list item applies to your research, read the appropriate section before selecting a response.

### Materials & experimental systems

n/a	Involved in the study
<input checked="" type="checkbox"/>	<input type="checkbox"/> Antibodies
<input checked="" type="checkbox"/>	<input type="checkbox"/> Eukaryotic cell lines
<input checked="" type="checkbox"/>	<input type="checkbox"/> Palaeontology
<input type="checkbox"/>	<input checked="" type="checkbox"/> Animals and other organisms
<input checked="" type="checkbox"/>	<input type="checkbox"/> Human research participants
<input checked="" type="checkbox"/>	<input type="checkbox"/> Clinical data

### Methods

n/a	Involved in the study
<input checked="" type="checkbox"/>	<input type="checkbox"/> ChIP-seq
<input checked="" type="checkbox"/>	<input type="checkbox"/> Flow cytometry
<input checked="" type="checkbox"/>	<input type="checkbox"/> MRI-based neuroimaging

## Animals and other organisms

Policy information about [studies involving animals](#); [ARRIVE guidelines](#) recommended for reporting animal research

Laboratory animals	9 male Long-Evans rats (175 – 200 g, ~3-month-old, in the beginning of the study).
Wild animals	The study did not use any wild animals.
Field-collected samples	The study did not involve field-collected samples.
Ethics oversight	All behavioral testing was carried out at the NIDA-IRP. Animal care and experimental procedures complied with the U.S. National Institutes of Health (NIH) guidelines and were approved by the Animal Care and Use Committee (ACUC) at the NIDA-IRP.

Note that full information on the approval of the study protocol must also be provided in the manuscript.